



UPCOMING

IN THIS CORNER

Jan 5 - Feb 10, 2008
Cassius Carter Centre Stage



SEA OF TRANQUILITY

Jan 12 - Feb 10, 2008
Old Globe Theatre



THE AMERICAN PLAN

Feb 23 - Mar 30, 2008
Cassius Carter Centre Stage



DANCING IN THE DARK

(Based on the classic
MGM musical
"The Band Wagon")
Mar 4 - April 13, 2008
Old Globe Theatre



THE GLASS MENAGERIE

April 12 - May 18, 2008
Cassius Carter Centre Stage



HERSHEY FELDER'S BEETHOVEN, AS I KNEW HIM

May 3 - June 8, 2008
Old Globe Theatre

Dear Friends,

Thank you for joining us for the 10th Anniversary production of *Dr. Seuss' How the Grinch Stole Christmas!*. The ten-year celebration has offered us the opportunity to make some exciting updates to the show and give it new life as it marks a decade in San Diego. Over the summer the entire original creative team came together at the Globe for an intensive two-week workshop to develop the new material, which has been incorporated into this production.

Since 1998 The Old Globe has performed this family favorite for over 350,000 children and adults and has provided over 40,000 free tickets to underserved children in the community. Now in its 10th wonderful year, *How the Grinch Stole Christmas!* has established a permanent place in the hearts of San Diegans, and we are truly grateful to Audrey Geisel for her generous support of this timeless holiday classic.

2007 has been an incredible year for the Theatre, having just wrapped up our enormously successful world-premiere musical, *A Catered Affair*, which is headed to Broadway in March, and the American premiere of *Oscar and the Pink Lady* starring legendary actress Rosemary Harris. We also celebrated a very successful Shakespeare Festival and launched the national tour of the hit Broadway musical *Avenue Q*. We're now looking ahead to 2008 with the upcoming world premieres of *In This Corner*, *Dancing in the Dark* and Hershey Felder's *Beethoven, As I Knew Him*, as well as preparing for construction of our new facilities, including a new second stage and education center, which, along with the Old Globe Theatre, will be encompassed in the new Conrad Prebys Theatre Center.

At this time of year we encourage you to consider making or renewing your year-end or campaign gift in support of The Old Globe and all that you have come to cherish about the institution. While the *Grinch* celebrates ten years in San Diego, the Globe itself has been an invaluable part of the community for over 70 years, and we hope you will continue to support the Theatre and help us maintain our world-class productions.

We sincerely thank you for your ongoing support, and wish you and your families all the best this holiday season.

LOUIS G. SPISTO
Executive Director

JACK O'BRIEN
Artistic Director

JERRY PATCH
Resident Artistic Director



Production Sponsors

DR. SEUSS' HOW THE GRINCH STOLE CHRISTMAS! is supported, in part, by the following generous sponsors:

The Old Globe gratefully acknowledges the extraordinary support of our title sponsor for *Dr. Seuss' How the Grinch Stole Christmas!*

The San Diego
Union-Tribune.

The Old Globe wishes to acknowledge and thank

Audrey S. Geisel

for supporting this holiday production for ten years and for her ongoing commitment to The Old Globe.

Special Thanks to



Bank of America continues its strong support of the Globe as a Production Sponsor of *Dr. Seuss' How the Grinch Stole Christmas!*. We remain extremely grateful to Bank of America for their valued partnership in providing both world-class theatre and outstanding arts education programs.



THE OLD GLOBE

The San Diego
Union-Tribune.

presents
Dr. Seuss'

How The GRINCH STOLE CHRISTMAS!™

Book & Lyrics by

Timothy Mason

Music by

Mel Marvin

Scenic Design

John Lee Beatty

Costume Design

Robert Morgan+

Lighting Design

Pat Collins

Sound Design

Paul Peterson

Orchestrator

Anita Ruth

Vocal Arrangements and Incidental Music

Joshua Rosenblum

Dance Music Arranger

David Krane

Stage Manager

Leila Knox

Assistant Stage Manager

Tracy Skoczelas

Choreography Restaged by

James Vasquez

Additional Choreography by

Bob Richard

Musical Director

Ron Colvard

Original Choreography by

John DeLuca

Directed by

Benjamin Endsley Klein

Original Production Conceived & Directed by

Jack O'Brien

+ Associate Artist of The Old Globe

Casting by Samantha Barrie and Telsey + Company

Produced by special arrangement with Dr. Seuss Enterprises, L.P.

How the Grinch Stole Christmas! book and characters™ and © 1957 Dr. Seuss Enterprises, L.P.

Dr. Seuss properties™ & © 2007 Dr. Seuss Enterprises, L.P. All Rights Reserved.

Originally commissioned by Minneapolis Children's Theater, Minneapolis, Minnesota

Original Stage Manager, D. Adams.

Season Sponsors

The Old Globe is deeply grateful to its Season Sponsors, each of whom has made an annual donation of \$50,000 or greater. These gifts are critical to maintaining the Theatre's high quality of artistic programming and award-winning work in the community.

The Legler Benbough Foundation

Sheila and Jeffrey Lipinsky

Karen and Donald Cohn

Conrad Prebys

Valerie and Harry Cooper

Donald and Darlene Shiley

Audrey S. Geisel

**Supervisor Pam Slater-Price
and the County of San Diego**

Globe Guilders

Sheryl and Harvey P. White

Joan and Irwin Jacobs

Anonymous

Las Patronas



IRVING HUGHES
Life is a lease. Negotiate well.

**CALIFORNIA
BANK**

TRUST

Microsoft®

PATRONS of the PRADO 

QUALCOMM®

**The San Diego
Union-Tribune.**

**WELLS
FARGO**

To become a Season Sponsor, please contact Director of Development Todd R. Schultz at (619) 231-1941 x2310.

Cast of Characters

IN ORDER OF APPEARANCE

<i>Old Max</i>Martin Van Treuren*
<i>Cindy-Lou Who</i>Gaby Greenwald (W) -or- Skylar Starrs Siben (R)
<i>Mama Who</i>Melinda Gilb*
<i>Papa Who</i>Steve Gunderson*
<i>Grandpa Who</i>James Vasquez*
<i>Grandma Who</i>Eileen Bowman*
<i>Boo Who</i>A.J. Foggiano (W) -or- Noah Leung (R)
<i>Annie Who</i>Samantha Littleford (W) -or- Bibi Valderrama (R)
<i>Danny Who</i>Ian Brininstool (W) -or- Ari Lerner (R)
<i>Betty-Lou Who</i>Hannah Prater (W) -or- Alison Grace Norwood (R)
<i>Grown-up Whos</i>Amy Biedel*, Randall Dodge*, Ron Christopher Jones*, Paul Morgavo*, Anise Ritchie*, Sarah Sumner*
<i>Teen Whos</i>Ashley Twomey (W) -or- Maddie Shea Baldwin (R)
<i>Little Whos</i>Charisma McKorn (R), Emily Mittleman (W), Dallas Perry (R), Kayla Solsbak (R), Kayla Stults (W), Celia Tedde (W), Jada Temple (R), Tommy Twomey (W)
<i>Young Max</i>James Royce Edwards*
<i>The Grinch</i>Kevin Bailey*
Stage ManagerLeila Knox*
Assistant Stage ManagerTracy Skoczelas*
Dance CaptainJames Vasquez*

TIME: Late December

LOCATION: Some Place Very Near Who-ville

There will be no intermission.

* Member of Actors' Equity Association, the Union of Professional Actors and Stage Managers in the United States

W = White Group

R = Red Group

Si desea una sinopsis de esta obra en Español, favor de pedírsela al acomodador que le entregó este programa.
If you would like a synopsis of this production in English or Spanish, please request it from an usher.

Board of Directors



Dear Friends,

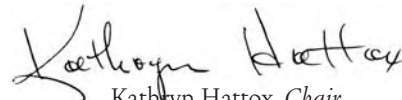
Thank you for joining us for this wonderful holiday musical, *Dr. Seuss' How the Grinch Stole Christmas!*. Celebrating its tenth year at the Globe, the *Grinch* has become a holiday tradition for families throughout San Diego.

This wonderful production comes to us each year through the generosity of our dear friend Audrey Geisel. I'm sure you join me in thanking her for this priceless gift. Both she and *The San Diego Union-Tribune* have been long-time supporters of this show. All of San Diego benefits from their generosity.

Last year the *Grinch* made its Broadway debut and was a phenomenal success receiving major critical and popular acclaim. The *Grinch* was one of four Globe musicals on Broadway in 2006. In March 2008, the Globe's 20th Broadway production, *A Catered Affair*, will open in New York. It has just completed its run here in San Diego.

The Globe is able to produce these extraordinary productions because of your support. We thank you for attending today and encourage you to contribute to the Globe with a year-end gift. Your support is absolutely critical to our survival and stability. I hope you'll join me as a proud member of the Globe's donor family.

Have a wonderful holiday season and a very happy New Year!


Kathryn Hattox, Chair,
Board of Directors

BOARD OF DIRECTORS / OFFICERS

Kathryn Hattox* <i>Chair</i>	Anthony S. Thornley* <i>Vice Chair Finance</i>	Deni S. Carpenter* <i>Vice Chair Development</i>	Sandra Redman* <i>Vice Chair Nominating</i>	Valerie Cooper* <i>Secretary</i>	Tim K. Zinn* <i>Treasurer</i>
--	--	--	---	--	---

DIRECTORS

Mary Beth Adderley-Wright
Joseph Benoit
Charles Brazell
Robert Cartwright
Donald Cohn*
Peter J. Cooper
Elaine Bennett Darwin
David W. Down
Bruce M. Dunlap
Sue Ebner
Bea Epsten
Joel Ewan
Pamela A. Farr
Jake Figi
Sally Furay, R.S.C.J.
Harold W. Fuson, Jr.

Victor P. Gálvez
Martin Goodman
Viviana Ibañez
Daphne Jameson
Sheila Lipinsky
Timothy A. MacDonald*
Sue Major
Fern Murphy
Arthur Neumann
Robin Nordhoff
Rafael Pastor
John Rebelo
Sara Rosenthal, M.D.
Phyllis Schwartz
Jean Shekhter
Chris Skillern
Nancy A. Spector

Louis G. Spisto*
Daniel L. Sullivan, Ph.D.
Julie H. Sullivan, Ph.D.
Dean Thorp
Evelyn Mack Truitt
Debra Turner
Crystal Watkins
Stewart J. Weissman
Harvey White*
Ruth Wikberg-Leonardi
Carolyn Yorston
Deborah Young

EMERITUS DIRECTORS
Garet B. Clark
J. Dallas Clark (1913-2005)
Bernard Lipinsky (1914-2001)

Delza Martin (1915-2005)
Patsy Shumway

HONORARY DIRECTORS
Mrs. Richard C. Adams
(1912-2005)
Clair Burgener (1921-2006)
Mrs. John H. Fox (1908-2003)
Audrey Geisel
Paul Harter
Gordon Luce (1925-2006)
Dolly Poet (1921-2007)
Deborah Szekely
Hon. Pete Wilson

*Executive Committee Member



Major funding provided by the City of San Diego Commission for Arts and Culture.

The Old Globe is supported in part by grants from Supervisor Pam Slater-Price and The County of San Diego.

MUSICAL NUMBERS

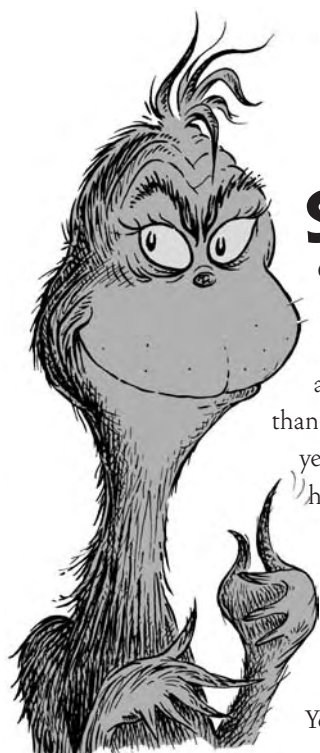
"Welcome Christmas" ("Fah Who Doraze")	Who Chorale
"Who Likes Christmas?"	Who Family, Grown-up Whos & Little Whos
"This Time of Year"	Old Max, Young Max
"I Hate Christmas Eve"	The Grinch, Young Max, Papa Who, Mama Who, Grandpa Who, Grandma Who, Cindy-Lou Who, Danny Who, Annie Who, Betty-Lou Who, Boo Who
"Whatchama-who"	The Grinch, Little Whos
"Welcome Christmas" (Reprise)	Who Chorale
"I Hate Christmas Eve" (Reprise)	The Grinch
"It's The Thought That Counts"	Papa Who, Mama Who, Grandpa Who, Grandma Who, Who Family, Who Shoppers & Who Merchants, Little Whos
"This Time of Year" (Reprise)	Old Max, Young Max
"One Of A Kind"	The Grinch
"Now's The Time"	Papa Who, Mama Who, Grandma Who, Grandpa Who
"You're a Mean One, Mr. Grinch"	Young Max, Old Max, The Grinch
"Santa For A Day"	Cindy-Lou Who
"You're a Mean One, Mr. Grinch" (Reprise)	Young Max, Old Max, Audience
"Who Likes Christmas?" (Reprise)	Who Chorale
"One Of A Kind" (Reprise)	The Grinch, Young Max, Cindy-Lou Who
"This Time of Year" (Reprise)	Old Max
"Welcome Christmas" (Reprise)	Who Family, Grown-Up Whos, Little Whos
Finale	The Grinch, Cindy-Lou Who & Whos Everywhere

WHO-CHESTRA

Conductor/Keyboard	Ron Colvard
Violin 1	Andria Altona
Violin 2	Karina Bezkrovnaia
Cello	Erica Erenyi
Bass	Joe McNally
Drums	Tim McMahon
Woodwind 1	John Reilly
Woodwind 2	Scott Reese
Synthesizer	Dan Greenbush
Contractor	Gary Scott

Orchestra musicians are members of the American Federation of Musicians of the United States and Canada.

HAPPY GRINCHIVERSARIES!



Since its premiere in 1998, the Globe's production of *Dr. Seuss' How the Grinch Stole Christmas!* has been a holiday staple for San Diego audiences, having been seen by more than 350,000 people over the last 10 years. While generations of children have grown up with the show, the production itself remained largely untouched. After *Grinch* made its move to Broadway in 2006, Director Jack O'Brien took stock of both the San Diego and New York productions and decided "there was more storytelling to be done."

**Every who
Down in Who-ville
Liked Christmas a lot ...**

**But the Grinch,
Who lived just north of Who-ville,
Did NOT!**

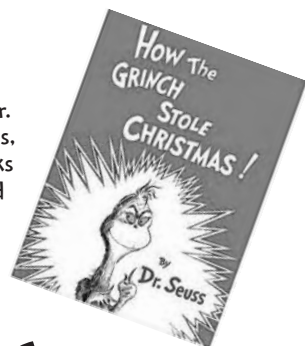


The 10th anniversary production, which coincides with the 50th anniversary of the book's publication, features a number of major revisions, including three new songs, among them a duet between Young Max and Old Max entitled "This Time of Year," a full company number entitled "It's the Thought that Counts," as well as the delightful carol, "Fah Who Doraze" ("Welcome Christmas"), from the popular animated version of *How the Grinch Stole Christmas!*. Other changes to the show include expanded dance sections in the children's song "Whatchamawho," a redesigned costume for the Grinch and significant changes to the book of this beloved musical.

GRINCH TIMELINE...

1957

How the Grinch Stole Christmas! by Dr. Theodor Geisel, also known as Dr. Seuss, is published. Like most children's books published after the war, the book used only three colors for its illustrations: black, white, and red. (The book's fourth color, pink, was added by combining the latter two inks.)



1966



How the Grinch Stole Christmas! is adapted for television by the MGM Animation/Visual Arts studio and airs on CBS on December 23rd. The actor Boris Karloff, better known for his work in horror cinema, provides both the narration and the voice of the Grinch.

1998

The stage-version of *How the Grinch Stole Christmas!*, directed by Artistic Director Jack O'Brien, premieres at the Old Globe Theatre. The show, produced in association with long-time supporter and San Diego resident Audrey Geisel, sets single-day box office records.



Cast from the 1998 production of *Dr. Seuss' How the Grinch Stole Christmas!*; photo by Craig Schwartz.

2006



The company of *Dr. Seuss' How the Grinch Stole Christmas!* takes their opening night bows. Photo by Aubrey Reuben.

How the Grinch Stole Christmas! premieres on Broadway at the Hilton Theatre on November 8th. The show is the biggest box-office hit of the 2006 holiday season.

2007

The creators and producers of the show converge in San Diego over two weeks in August to workshop a new version of the show, which includes 3 new songs. The revamped show will run November 25 - December 30 at The Old Globe.



Jack O'Brien and Audrey Geisel at 2007 workshop; photo by J. Kat Woronowicz

AN AFTERWORD....

from the Director

Ten years ago, when Audrey Geisel and I sat enjoying the relative quiet of breakfast in a La Jolla hotel, it never occurred to either of us that we were embarking on a journey that was to extend fully ten years into the future, to say nothing of involving other markets, other collaborators.

I had been haunted by my long-time desire to create for children perhaps the perfect “first theatre” experience possible; and Audrey, still smarting from the treatment the movie industry had made of her late husband’s most brilliant creations, was, frankly, just thinking in terms of San Diego and Christmas. A safe “home” for her Grinch!

Now, nourished by ten years of adoring audiences, and ripened to near-classic status, our own Grinch has begun to burst its seams and assert its natural “Grinchy” personality on our modest plans. While we were fluffing the home pillows, the nation came calling, and the next thing we knew — all of us — an anniversary was looming, and Broadway was knocking. We had work to do!

With the greatest of pleasure, I was able to assemble almost all the original participants for some serious work over the summer — a kind of “reverse workshop” in which we analyzed everything we loved about this piece, and carefully dissected what might be better. After all, we all realize that *How the Grinch Stole Christmas!*, augmented with music and lyrics by Mel Marvin and Timothy Mason may, indeed, be the only true American Christmas story we’re likely to ever know, and as such, we owe it our best shot.

What has resulted, then, is like taking a classic car and attending to the leather and the chrome. A few new musical numbers have been added; some tweaks on the story line have been clarified, and we have begun to put the final stamp of approval on something that, for years to come — I hope and pray! — will always carry with it, wherever in America it may go, the individual mark of love, honor, joy, and craft that has become the hallmark of Globe work, at home and abroad.



L-R: Jack O'Brien, Audrey Geisel, composer Mel Marvin, bookwriter/lyricist Timothy Mason; photo by J. Kat Woronowicz.



THEODOR SEUSS GEISEL, the writer best known as “Dr. Seuss,” was born on March 2, 1904 in Springfield, MA. He first used his pen name while attending school at Dartmouth College in 1925, and kept the “Dr.” despite never having formally earned a doctoral degree. He started to pursue a Ph.D. in literature at Oxford University in the U.K., but left to begin a career as a writer and cartoonist in the U.S.

During the Depression he drew advertisements for such corporations as General Electric and NBC to support his family. He was a frequent contributor to such magazines as *The Saturday Evening Post*, *Life*, and *Vanity Fair*, and eventually became the editorial cartoonist for the liberal New York City daily newspaper, *PM*.

In 1957, Seuss collaborated with publishers Houghton Mifflin and Random House to create a children’s book using 225 words that were considered “new-reader” vocabulary words, in order to promote childhood literacy. The result was *The Cat in the Hat*, which was an instant success. Later that same year, *How the Grinch Stole Christmas!* was published. Dr. Seuss went on to write more children’s books, many of which are considered classics and are the staple of children’s libraries around the world.

Dr. Seuss died on September 24, 1991 in La Jolla, where he had made his home for many years.

We dedicate this tenth year production of *How the Grinch Stole Christmas!* to the immutable memory of its creator, our local genius, Ted Geisel, and his beloved Audrey, who has, in her own right, become the visionary he always knew she could be.

— Jack O'Brien



FOR MORE INFORMATION ABOUT OLD GLOBE PRODUCTIONS, PLEASE VISIT OUR WEBSITE AT www.TheOldGlobe.org.

Education Experiences

The Copley Plaza outside The Old Globe is swarming with children. Teachers mingle in the crowd of joyful faces. Volunteers guide each group to its assigned place in line. And then the doors to the theatre open, the children file in and the magic begins.



SKYLAR STARRS SIBEN AS "CINDY-LOU WHO" AND JAY GOEDE AS THE "GRINCH." PHOTO BY CRAIG SCHWARTZ.

For ten years The Old Globe has presented *Dr. Seuss' How the Grinch Stole Christmas!* to San Diego audiences who gather to celebrate the holiday season at the theatre, and for each of those years school groups have gathered on the Plaza to share in the joy.

This extraordinary musical is Audrey "Mrs. Seuss" Geisel's gift to the San Diego community and The Old Globe honors that gift by ensuring that over 4,000 children attending Title One schools have the opportunity each year to see the show free of charge.

There is nothing quite like the moment that 600 children have their first experience with live theatre. With wide eyes and rapt attention they willingly enter the world of the play. Dr. Seuss' beautiful story has captured the hearts of both children and adults around the world. The play brings his fantasy world to life and children, more than anyone else, understand it best. A child's ready imagination and earnest emotional response reminds us all to take a moment to let down our guard and to let ourselves join in the merriment. The *Grinch* is a marvelous confection that beckons us all to remember what it means to be a child.

For some young audience members the Grinch is a fear-some creature whose oversized green, hairy body and long, gnarled fingers surprise and then delight them. Some scream, some clutch their companions in the theatre, and some simply watch in awe and wonder as this woeful soul slowly but surely learns the true meaning of Christmas. And the children are ready to guide him on his journey of enlightenment. They know what he has gone through, they understand his struggle and they are ready to welcome him to the delights of friendship and love.

There is a moment in the play when the Grinch, newly reformed and now a friend to the inhabitants of Who-ville, leaves the stage and walks down the aisle into the audience to make friends with the children too. The characters on the stage call to him and he seems not to hear them at first. During one student matinee of the show the children, though thrilled that the Grinch was visiting them, were clearly distressed that the poor citizens of Who-ville were searching for him. One tiny child called out over the rest of the voices and entreated the Grinch in a clear and gentle voice, "Mr. Grinch, Look! Go back up there to your family!" And the Grinch sweetly thanked the child and scurried back to his companions on the stage.

After each performance the children exit the theatre ecstatic over what they have just experienced. As the lobby doors opened into the sunlight after a matinee last year one little boy leaped into the air and threw his arms skyward and shouted with glee, "I loved that!" The sheer joy of the moment; the exhilaration with which he expressed himself was enough to make any Grinch melt into a puddle of holiday cheer that would last at least until spring. It is for these children that this play exists. It is all about the joy.



Fifty San Diego schools will bring students to seven free student matinees of the show this year. Over 150 classroom teachers will gather for a professional development workshop to explore ways to incorporate the play into their curriculum, so that while their students enjoy the show their teachers can also use it as a tool to enhance literacy in the classroom. Through poetry, movement, writing and art, teachers extend the theatre experience so that learning is simply part of the joy of the show. Theatre is a fantastic teaching tool and savvy teachers embrace the artform as a way to enliven their teaching and bring some of the joy back to the classroom.

In addition to the annual *Grinch* free student matinee performances, The Old Globe's Education Department has numerous programs which take place year round and are specifically designed to support educator efforts in myriad ways. The **Globe Readers Program** enhances literacy by bringing dedicated volunteers into classrooms to share their love of reading with thousands of children. Those children then write their own stories and learn ways to turn their creative writing into theatre pieces or short plays that they then perform in their schools and even here at The Old Globe. The program has grown in the three years of its existence to serve over 2,000 students in approximately 100 classrooms. By combining theatre with reading, the program provides quality experiences in the arts while building literacy skills.

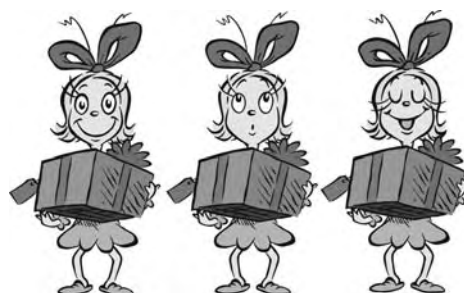
The new **Globe in the Classroom Residency Program** supports teachers' curriculum goals by bringing theatre professionals into the schools to work with classes on ways to demonstrate what they've learned in class by performing it for their peers. Through improvisation, theatre games and collaborative writing students synthesize core learning while exploring the art form. Students enjoy the fruits of those labors during in-school performances by the participating classes and the learning is further extended through those presentations.

High school students benefit from The Old Globe's free **Student Matinee Program**, seeing many of the Theatre's shows in special daytime performances presented specifically for teen audiences. In the spring semester of 2008, over 4,000 students will attend performances of *In This Corner*, *Beethoven*, *As I Knew Him*, *Dancing in the Dark*, and *The Glass Menagerie*. But simply seeing a show isn't enough. Students need to under-

stand the history and background of the play and the playwright; elements of the production need to be investigated; and connections to their own experiences need to be explored. With that in mind, the Education Department trains Teaching Artists to visit each class that will be attending one of our shows to present interactive workshops that prepare students for the experience. These workshops provide an opportunity for teachers to make curriculum connections and for the Globe to give more than just exposure to the arts but rather a fuller exploration of the theatre through hands-on activities.



The Old Globe staff looks forward each year to the moment those first audiences arrive for a glimpse of the *Grinch*. Those smiling faces on the plaza and the rapturous applause in the Theatre bring true pleasure to everyone. It's a gift we give to the community but it's one that we get back abundantly through the joy our audiences share. And all year long, that gift keeps on giving with education programs that spring from the work of art on the stage and extend to classrooms near and far. We wish our audiences great joy at the holidays and throughout the year.



Dr. Seuss properties
TM & © 1957 and 2007 Dr. Seuss Enterprises, L.P.
All rights reserved.

Education Donors

The Old Globe's Education and Outreach Programs serve more than 45,000 children and adults each year and include reading initiatives for underserved schools, student matinee performances and lectures with artists and performers. The magnitude of the Globe's Education Programs would be limited without the support of generous donors who support these valuable educational experiences.

Annual gifts for the Globe's Education Programs include cash and in-kind donations, including Sempra Energy's support of The Grinch Children's Initiatives, Starbucks's provision of books, lunch and more at our annual Seussabration, QUALCOMM's annual gift in support of the Shakespeare Festival and Shakespeare Unplugged!, and Wells Fargo's significant grant for all of the Globe's Education and Outreach Programs.



The Old Globe's Education and Outreach Programs are supported by:



LEAD EDUCATION PROGRAM SPONSORS

Donald and Darlene Shiley
The San Diego Union-Tribune
County Supervisor Pam Slater-Price
QUALCOMM
The City of San Diego Commission
for Arts and Culture
The Shubert Foundation
Wells Fargo
American Express
Anonymous



California Bank and Trust
Mary Ann Blair Fund at
The San Diego Foundation
Union Bank of California
AT&T
Bank of America
Nokia
U.S. Bank
Sempra Energy

DEAN'S LIST EDUCATION PROGRAM SPONSORS

Torrey Pines Bank
Starbucks Coffee Company
The County of San Diego
Community Enhancement Program
The San Diego Foundation's
Weingart-Price Fund
The Kenneth T. and Eileen L. Norris
Foundation



HONOR ROLL EDUCATION PROGRAM SPONSORS

Smith Barney
Anonymous
National Corporate Theatre Fund
Samuel I. and Henry Fox Foundation
Mission Federal Credit Union
Patrons of the Prado
John and Marcia Price Family
Foundation
WD-40
Cush Family Foundation
Seltzer Caplan McMahon Vitek
Nordstrom
Peter Cooper and Norman Blachford
Globe Guilders



The Grinch 10th Celebration

Leadership Gifts to The Old Globe

The Old Globe would like to recognize and thank the following generous individuals who have made extraordinary gifts of \$1 million or more to this organization. These major contributions have been designated for artistic projects, the endowment and facilities, and help The Old Globe remain one of our country's great theatre institutions.

\$20,000,000 or greater

Donald and Darlene Shiley

\$10,000,000 or greater

Conrad Prebys

\$5,000,000 or greater

Sheryl and Harvey P. White

Kathryn Hattox

Karen and Donald Cohn

\$1,000,000 or greater

**California Cultural and
Historical Endowment**

Estate of Dorothy S. Prough

The Rivkin Family

Estate of Beatrice Lynds

**Audrey S. Geisel /
San Diego Foundation
Dr. Seuss Fund**

Mr. and Mrs. Victor H. Ottenstein

Mrs. Helen Edison

**The Stephen and Mary Birch
Foundation**

Marking 10 years of *Dr. Seuss' How the Grinch Stole Christmas!* at The Old Globe, supporters and friends of the Theatre celebrated at The Lodge at Torrey Pines on Friday, November 16, honoring **Audrey Geisel** (a.k.a. "Mrs. Dr. Seuss") for her long-standing and generous support of the Globe.

For many years Audrey Geisel has been a special friend of the Globe and in 1998 made an exclusive agreement with the Theatre to produce the *Grinch* here in San Diego.

Last year, the Globe worked with Audrey and New York producers to mount the musical's Broadway debut, which was an enormous success, and this year the *Grinch* returns to Broadway for a run at the St. James Theatre. Since 1998 more than 500,000 people have seen the *Grinch* at the Globe or on Broadway, and an additional 50,000 children and adults will experience this delightful production in 2007.

Lead underwriters of the *Grinch* 10th Celebration were **Donald and Darlene Shiley**, and serving as Co-Chairs were Globe Board Members **Valerie Cooper** and **Sandy Redman**.



AUDREY GEISEL AND DARLENE SHILEY, PHOTO BY NOWELL WISCH.



2006 GRINCH CAST. PHOTO BY CRAIG SCHWARTZ.

Profiles

Kevin Bailey (The Grinch)

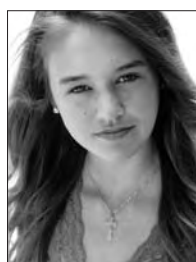


THE OLD GLOBE: *Dr. Seuss' How the Grinch Stole Christmas!* ('06), *The Times They Are A-Changin'*. BROADWAY: *Annie Get Your Gun*, *The Lion King* (original cast and Los Angeles).

TOURING: *Guys and Dolls*, *Falsettos*, *An Unfinished Song*, *Jesus Christ Superstar* (Jefferson Award), *Cabaret*, *Phantom of the Opera*, *The Foreigner*. LOS ANGELES: *Annie Get Your Gun* (2007 LA Ovation Nominee, Best Actor), *Kiss Me Kate*, *Dorian* (West Coast Premiere), *Jekyll & Hyde*, *The Scarlet Pimpernel*.

REGIONAL: *The Fantasticks*, Ford's Theatre. FILM: *The Dismissal*. Mr. Bailey is the proud co-owner and Producing Director of the award winning NoHo Arts Center in North Hollywood, California, with his long-time partner, James J. Mellon and associate Doug Hutchinson. Kevin is prouder still of his beautiful twin children, William and Nora. Education: MFA, University of Virginia; BA in Theatre, Hope College.

Maddie Shea Baldwin (Teen Who, Red Group)



THE OLD GLOBE: *Ace*, *Dr. Seuss' How the Grinch Stole Christmas!* ('05, '06), Shakespeare Conservatory's *Macbeth* (Ensemble). ELSEWHERE: *Pirates of Penzance* (Sister), San

Diego Lyric Opera Academy; *Peter Pan* (Indian), *Alice in Wonderland* (Larkspur, Bird), *Annie* (Orphan), *The Sound of Music* (Brigitta), *Madeline's Rescue* (Orphan Girl), San Diego Junior Theatre; *The King and I* (King's child), Francis Parker High School. Maddie is currently in the 9th grade at Francis Parker school. She was a 2005, 2006 Honor Roll student and recipient of the 2006 Laurel Award for outstanding academics and citizenship. She is a member of Acappella Ensemble and Shakespeare Club.

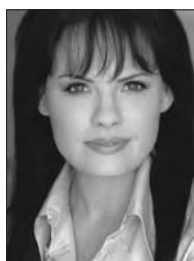
Amy Biedel (Grownup Who Ensemble)



THE OLD GLOBE: Debut. ELSEWHERE: *Buddy: The Buddy Holly Story*, Welk Resort Theatre; *The Full Monty*, San Diego Musical Theatre; *The Turn of the Screw*, *The Matchmaker*, *It's a Won-*

derful Life, *My Fair Lady*, *The Invention of Love*, Cygnet Theatre (Resident Artist); *A Bright Room Called Day*, Backyard Productions/Diversions Theatre; *Hecuba*, 6th @ Penn; *Jersey Boys* (Understudy), La Jolla Playhouse; *Talley's Folly*, Mt. Hood Rep; *Gypsy*, *The Fitness Game*, Sundance; *The Merry Wives of Windsor*, *The Turn of the Screw*, Actor's Repertory Theatre Ensemble; *Joseph...Dreamcoat*, August Night Theatre Group; *Big Holiday Broadcast*, Provo Theatre Company; *King Lear* (Understudy), Pioneer Theatre Company; *The Voyage of the Little Mermaid*, Disney/MGM Studios; *Godspell*, Disney Story Theatre; *Robert and Elizabeth*, SCERA Theatre; *Big River*, Jackson Hole Playhouse. EDUCATION: BA in Theatre and Media Arts: Acting Emphasis, Brigham Young University.

Eileen Bowman (Grandma Who)



THE OLD GLOBE: *Dr. Seuss' How the Grinch Stole Christmas!*. Eileen is thrilled to be back in Who-ville. This marks her 10th year in the cast. She is proudly the only original cast member to

be here all ten years, and she could not be happier. Eileen has performed in many regional theatres across the country. Some of her favorite roles include Eliza Doolittle in *My Fair Lady*, Lena Lamont in *Singing in the Rain* and Agnes Gooch in *Mame*. She is best known for singing opposite Rob Lowe on the 61st Academy Awards telecast seen by over a half billion people. She would like to thank God for all his amazing blessings, to her wonderful

(and) handsome husband Marc, and to her cherished family and friends who are always there for her.

Ian Brininstool (Danny Who, White Group)



THE OLD GLOBE: *Ace*. REGIONAL: *Ragtime* (Edgar), *Urinetown*, *Oliver!* (Oliver), Starlight Theatre; *Festival of Christmas* ('05 and '06), Lamb's Players Theatre; *All the Time in the World*, Actor's

Alliance Festival; *Seussical the Musical* (Jojo), LaJolla Stage Company; *The Sound of Music*, San Diego Junior Theatre; *Joseph and the Amazing Technicolor Dreamcoat*, *Nutcracker*, Holiday Concerts, San Diego Civic Theatre; Christmas Concert, Spreckel's Theatre. TV/FILM: *Cory in the House*, *Veronica Mars*, *Kid Billy vs. The Kidnappers*. TRAINING: Vernetta's Dance Studio; Acting Professionally, Inc; San Diego Small Opera; Leigh Scarritt Productions; Culture Shock. In 2005, Ian was awarded Outstanding Lead Actor in a Musical (Under 13) by the National Youth Theatre for his role as Oliver. Ian sincerely thanks his parents, friends, instructors and the entire Old Globe family for their ongoing care and support.

Randall Dodge (Grown-up Who Ensemble)



THE OLD GLOBE: *Dr. Seuss' How the Grinch Stole Christmas!* ('06). REGIONAL: *Thoroughly Modern Millie*, *The Sound of Music*, *Seussical the Musical*, *Disney's Beauty and the Beast*, *The Pirates of*

Penzance, *The Fantasticks*, *Children of Eden*, *The Most Happy Fella*, *The Scarlet Pimpernel*, *Company*, *Promises, Promises*, *How to Succeed in Business...*, *She Loves Me*, and the west coast premieres of *No Way to Treat a Lady* and *Pete 'n' Keely*. EDUCATION: Randall is a proud graduate of the American Academy of Dramatic Arts New York City. www.RandallDodge.net.

James Royce Edwards

(Young Max)



A native of San Diego this is James' debut at The Old Globe.

BROADWAY/
NATIONAL TOURS:
Hairspray, *Mamma Mia!*,
Pippin, *All Shook Up*.
OFF-BROADWAY:

Altar Boyz, *Matthew Passion*. REGIONAL: *Forever Plaid*, *Footloose*, *Joseph... Dreamcoat*, *The Sound of Music*, *Cinderella*, *Fiddler on the Roof*, *Miss Saigon*, *Children of Eden*, *Scarlet Pimpernel*, and many others. See lots more at www.jamesroyceedwards.com. James dedicates this show to Karin, Kadence and all his family and friends here in San Diego.

A.J. Foggiano

(Boo Who, White Group)



THE OLD GLOBE:
Boo Who in *Dr. Seuss' How the Grinch Stole Christmas* ('06-'07).

OTHER CREDITS:
Wizard of OZ (Coroner),
Starlight Theater; *Peter Pan* (Michael), C.Y.T.;

The Music Man (Harold Hill), F.A.M.E. FILM: *Ready? Ok!* by James Vasquez. A.J. is in his 4th year of the F.A.M.E. program at his elementary school where he was recently cast as Oliver in their upcoming production of *Oliver!*.

Melinda Gilb

(Mama Who)



THE OLD GLOBE:
Suds and *Dr. Seuss' How the Grinch Stole Christmas!* (Original Mama Who.) Melinda is proud to be back at the Globe after a long run in *Menopause the Musical* as

(Iowa Housewife), at the Lyceum Theatre. BROADWAY: *Singin' in the Rain* (Original Cast). OFF BROADWAY: *Back to Bacharach and David*, *Suds* (Original Cast and co-author).

FIRST NATIONAL TOUR: *The Pirates of Penzance*. REGIONAL: *Sweeney Todd* (Mrs. Lovett - Craig Noel Award), *The Music Man*, Starlight Theatre; *The Smell of the Kill*, *Back to Bacharach and David*, North Coast Rep; *Miss Witherspoon*, *Always Patsy Cline*, *Six Women with Brain Death*, San Diego Rep; Readings of *A Little Night Music* and *Assassins*, Cygnet Theatre; *Thoroughly Modern Millie*, Welk Resort Theatre; *American Rhythm*, Lamb's Player's Theatre; *Melinda and Steve Show* (with Steve Gunderson), New York, Los Angeles and San Diego. TV: *The Full Wax* (BBC-1), *Becker* (CBS). Favorite role, Mama to her 4 year old son Knight.

Gaby Greenwald

(Cindy-Lou Who, White Group)



THE OLD GLOBE:
Debut. Gaby is ecstatic to be part of the *Dr. Seuss' How the Grinch Stole Christmas!* cast. Since age 7, she has performed in several local musical productions including

The Stinky Cheese Man, San Diego Junior Theatre; *Joseph and The Amazing Technicolor Dreamcoat*, *Oliver!*, *Hansel and Gretel*, *Rumpelstiltskin*, and *Pippi Longstocking*, J* Company. She is now in 4th Grade at Sycamore Ridge Elementary and also enjoys soccer, skiing and surfing. Her very first and favorite Dr. Seuss book of all is *Green Eggs and Ham*.

Steve Gunderson

(Papa Who)



THE OLD GLOBE: *Dr. Seuss' How the Grinch Stole Christmas!*, *Suds* (Co-Writer), *A Trip to Chinatown*, *Hadrian VII*. NEW YORK: *Suds*, Criterion Theatre; *Forever Plaid*, *Back to Bacharach &*

David, Steve McGraw's; *Street Scene*, Equity Library Theatre; *Topsy and Bunker the Cat Killers*, Second Stage Theatre. REGIONAL: *Romance*, *Miss Witherspoon*, *A Christmas Carol*, San Diego Rep; *Back To Bacharach & David*, North Coast

Rep; *I Love You, You're Perfect, Now Change*, Welk Resort Theatre; *Forever Plaid*, the *Holiday Edition* (premiere), Pasadena Playhouse; *Forever Plaid*, Theatre in Old Town; *Only Kidding*, Phoenix Little Theatre; *The Heidi Chronicles*, Gaslamp/Hahn Cosmopolitan; *Sweeney Todd*, Fritz Theatre; *Forever Plaid*, Laguna Playhouse, *An Ideal Husband*, Lamb's Player's Theatre. NATIONAL TOUR: *The Grapes of Wrath*. For more check out www.SteveGunderson.net.

Ron Christopher Jones

(Grown-up Who Ensemble)



THE OLD GLOBE: *Dr. Seuss' How the Grinch Stole Christmas!* ('04, '05, '06), *The King of the Kosher Grocers*. REGIONAL: *The Hot Mikado*, *My One and Only* as Mr. Magix, Starlight;

Man of La Mancha, SBCLO; *Play On!*, Pasadena Playhouse; *A Christmas Carol*, San Diego Rep; *The All Night Strut*, West Coast Tour. TV: *The Jamie Kennedy Experiment*, *Surrender Dorothy* starring Diane Keaton. EDUCATION: BFA in Acting, United States International University. He is a proud member of the Musical Theatre Guild and Actors' Equity Association.

Ari Lerner

(Danny Who, Red Group)



THE OLD GLOBE: Ari is thrilled to be returning for his 5th year to *Dr. Seuss' How the Grinch Stole Christmas!* (Lady Bug '03, Boo Who '04-'05, Danny Who '06-'07). REGIONAL: *A*

Christmas Carol (Tiny Tim '01-'02), *Mendel, Inc.*, SD Repertory Theatre; *The Nerd*, North Coast Repertory Theatre; *The Full Monty*, SD Musical Theatre; *One for the Road*, Lamb's Players Theatre; *The Music Man* (Winthrop), *Oliver!*, *The Scarlet Pimpernel*, *Jesus Christ Superstar*, *Fiddler on the Roof*, *The Wizard of Oz*, Starlight Musical Theatre. TELEVISION: *Veronica Mars*

(continued on next page)

(Albert Hauser). *FILM: 29th and Gay, Ready O.K.!*, by James Vasquez. *VOICE-OVER: Spencer's Crossing* (Spencer); *Mr. Quiz-Me I & II*. Ari is 12 years old. Ari enjoys making backyard horror movies with his brother, Zev.

Noah Leung

(Boo Who, Red Group)



THE OLD GLOBE: Debut. Noah is thrilled to be playing the role of Boo Who! **REGIONAL:** *Aladdin* (Genie), *Beauty and the Beast* (Chip) and *Pocahontas* (Warrior), Rancho Santa Fe Com-

munity Center. Noah is a fourth-grade student. He enjoys playing the piano, skateboarding, snowboarding and breakdancing. Since age 4, Noah has been studying karate and recently achieved the rank of black belt.

Samantha Littleford

(Annie Who, White Group)



THE OLD GLOBE: Debut. Local youth theatre roles include: Young Cosette, *Les Miserables*; Jane Banks, *Mary Poppins*; Dorothy Gale, *Wizard of Oz*; Amaryllis, *The Music Man*; Snoopy,

Snoopy. Samantha is 11 years old and a 6th grader at High Tech Middle School. She studies voice, dance and piano and enjoys hanging out with her family. She would like to thank her family, all of her teachers at HTM for their wonderful support, and Debbie Roberts for helping her "find her voice." This is Samantha's first season in "*The Grinch*" and she is grateful to The Old Globe for this incredible opportunity.

Paul Morgavo

(Grownup Who Ensemble)



THE OLD GLOBE: Debut. Paul is thrilled to be taking his first steps on The Old Globe's stage. A Southern California native, Paul has performed in venues all across the country.

Some of his favorite credits include **REGIONAL:** *Ragtime* (Henry Ford), *Urinetown* (Pa Strong), *Jesus Christ Superstar*, *How to Succeed...* (Gatch), *The Scarlet Pimpernel*, San Diego Civic Light Opera; *Big River* (The Duke), *The Pirates of Penzance* (Samuel), *Me and My Girl*, *South Pacific* (Professor), *42nd Street* (Pat Denning), *Footloose* (Coach Dunbar), *Evita*, *The Mystery of Edwin Drood*, *Pump Boys and Dinettes* (Jackson), *The Boys Next Door* (Barry), Moonlight Stage Productions; *The Unsinkable Molly Brown* (Johnny Brown), Sierra Repertory Theatre; *Baby*, South Coast Rep; *Damn Yankees* (Smokey), Fullerton Civic Light Opera; *Blood Brothers* (Narrator), *Antigone* (Creon), Stagehouse Theatre; *Secret Garden* (Archibald), James R. Armstrong Theatre; *Damn Yankees* (Linville), *My Fair Lady*, *Carousel*, Welk Resort Theatre; *Hair* (Claude), Lyceum Theatre; *The Lion in Winter* (Geoffrey), Westminster Theatre; *Footfalls*, Oxford University.

Alison Grace Norwood

(Betty-Lou Who, Red Group)



THE OLD GLOBE: *Dr. Seuss' How the Grinch Stole Christmas!* ('06) Alison is very excited to return to *The Grinch* again this year!! This young actress enjoys singing, dancing and playing the

piano. Her most recent credits include her voiceover performance in *Little Einsteins* (Annie) in Disney Playhouse Live, and a role in the film *Ready? OK!* Her credits also include her 2005 performance in *A Dickens Christmas Carol* (Tiny Tim) in Branson, Missouri (Silver Dollar City); Voiceover for Disney On Ice,

CYT Performances of *Cinderella* and *Jungle Book*; California Music Studio recitals; and Love to Dance/Dance Moves recitals. Alison enjoys performing and hopes that she can use her talents for the enjoyment of others.

Hannah Prater

(Betty-Lou Who, White Group)



THE OLD GLOBE: *Dr. Seuss' How the Grinch Stole Christmas!* ('05, '06) **REGIONAL:** *Joseph...*, *Dreamcoat*, National Tour, Flores Entertainment, Civic Theatre, *Ragtime*, *Wizard of Oz* and

Roar of the Greasepaint, Starlight Musical Theatre, *Seussical*(JoJo), *Rumplestiltskin* (Rumplestiltskin), *Charlotte's Web* (Fern), *Tiger at the Gate* (Polyxene), *Beauty and the Beast* (Chip). Hannah was awarded Outstanding Lead Actress 2006 for her portrayal of Rumplestiltskin in *Rumplestiltskin*. **FILM/COMMERCIALS:** *Let Others Suffer* by Ivan Libragi (co-star), *I See ABC's* (principal) **VOICEOVER:** Rockabye Toys; 2006 Holiday Magic CD - distributed locally to children at Rady's Children's Hospital as well as several other children's hospitals across the country. She would like to thank The Old Globe for this wonderful opportunity.

Anise Ritchie

(Grownup Who Ensemble)



THE OLD GLOBE: Debut. **NATIONAL TOUR:** *Ain't Misbehavin'*, *Menopause, the Musical*, *Beehive*, *The 60's Musical*, *Sophisticated Ladies*, *Showboat*, *Once On this Island*, *A Grand Night for Singing*,

Blue's in the Night and *Smokey Joe's Café*, San Francisco. *Little Shop of Horrors*, Portland, Oregon and Ashland's famed Shakespeare Theatre. Lorraine Hansberry Theatre-San Francisco: *Dance on Widows Row* (Simone Jackson), *Blue* (Peggy Clark), *Eubie* and *Ain't Misbehavin'*. **WORKSHOP:** San Francisco's "Aftershock."

EUROPEAN TOUR: *Emmitt Powell and the Gospel Elites* (Lead Singer).

Skylar Starrs Siben
(Cindy-Lou Who, Red Group)



Dr. Seuss' How the Grinch Stole Christmas! ('06). Skylar is thrilled to be returning to The Old Globe as Cindy-Lou Who. She is 8 years old and a 3rd grader. Skylar

had a wonderful time participating in the Grinch workshop with the original creators this past summer. She is looking forward to sharing all of the exciting changes! REGIONAL: *The Sound of Music* (Gretl), Moonlight Stage. Skylar's favorite role is playing "big sister" to Shea (4) and Sloane (2). Skylar loves to read *Dr. Seuss' How the Grinch Stole Christmas!* to her little sisters.

Sarah Sumner
(Grownup Who Ensemble)



THE OLD GLOBE: *Dr. Seuss' How the Grinch Stole Christmas!* ('06). REGIONAL: *Urinetown* (Craig Noel Award), *Oliver*, *The Philadelphia Story*, *Anything Goes*. EDUCATION: BFA in

Musical Theatre, California State University, Fullerton.

Ashley Twomey
(Teen Who, White Group)



THE OLD GLOBE: Debut. REGIONAL: *The Sound of Music*, *Annie Get Your Gun*, Moonlight Stage Productions; Disney's *Beauty & the Beast*, Starlight Theater; *Evita*,

Welk Resort Theater. ELSEWHERE: *Rumpelstiltskin is My Name* (Queen Prima Donna-2006 NYT Outstanding Supporting Actress), *The Music Man, Jr.*, *Beauty & the Beast*; *Oliver!*,

The King and I, *Wizard of Oz*, *Snow White*, *Snoopy!*, *Fiddler on the Roof*, and *Traditions of Christmas Musical Spectacular*. COMMERCIAL: Intel Corporation, Mighty Max Films. TV: *Veronica Mars*.

Bibi Valderrama
(Annie Who, Red Group)



THE OLD GLOBE: *Dr. Seuss' How the Grinch Stole Christmas!* ('06) She currently is featured as Josefina at American Girl Theatre in Los Angeles. OTHER CREDITS: Sasha/ Katarina in 2005

and 2006 productions of *Zhivago* at La Jolla Playhouse, directed by Des McAnuff. Chantelle in *Restless Spirits* and Tiny Tim in 2003/2004 productions of *A Christmas Carol*, San Diego Repertory Theatre; *Roar of the Greasepaint* and *The Music Man*, Starlight Theatre. Bibi has been a soloist at venues around Southern California, including the national anthem for the Anaheim Angels. She has appeared in commercials, voiceovers, and several independent films. Bibi is 10 years old and elated to be returning to Who-ville! She dreams of someday appearing on Broadway.

Martin Van Treuren
(Old Max)



THE OLD GLOBE: Debut. Martin Van Treuren appeared on Broadway last season in *Dr. Seuss' How the Grinch Stole Christmas!*. OTHER BROADWAY CREDITS: *Me and My Girl*, and the

original casts of *Singin' in the Rain*, *A Christmas Carol* and *Jekyll & Hyde* (also on HBO). NYC Opera debut as Voltaire/Pangloss in *Candide*. He played both Ruth and The Major General in the highly acclaimed Off-Broadway production of *The Pirates of Penzance*. OTHER OFF-BROADWAY: *Blessing in Disguise*, *The Miser*, *Anyone Can Whistle* (Carnegie Hall) and *Allegro* (City Center Encores). The Barrow Group:

Uncle Vanya, *Sonnets for an Old Century* and *Medal of Honor Rag*. He toured in *Camelot* starring Richard Harris, *Grand Hotel* directed by Tommy Tune, *Jekyll & Hyde* (pre-Broadway), and *Joseph...Dreamcoat* starring Jon Secada. TV: *Law & Order SVU*.

James Vasquez
(Grandpa Who/ Dance Captain/ Choreography Restaging)



THE OLD GLOBE: *Dr. Seuss' How the Grinch Stole Christmas*, *The Boiler Room*, *If the Shoe Fits*. OFF-BROADWAY: *The Merry Wives of Windsor*, NY Public Theater. REGIONAL: *Oliver!*,

Alabama Shakespeare Festival; *The Fantasticks!*, Bristol Valley. LOCAL: *Shear Madness*, *Pageant Assassins*. FILM: Co-founder, Daisy 3 Pictures. 29th and Gay (writer/lead), available on DVD from TLA Releasing. *Ready? OK!* (writer/director), currently in post-production. Mr. Vasquez received his BFA in Drama from the Juilliard School.

Charisma McKorn
(Little Who Ensemble, Red Group)

THE OLD GLOBE: Debut. Charisma is 9-years old and has trained in the areas of dance, gymnastics, theatre and voice after seeing her first musical when she was 4. REGIONAL CREDITS INCLUDE: *The Wizard Of Oz*, Starlight Theatre and VAPA's production of *Bye Bye Birdie*. She has also appeared in two Independent Films and commercials for Sega's Super Mario video game and Toyota. Her dream is to someday perform on Broadway, and she is thrilled to be a part of the cast of *Dr. Seuss' How the Grinch Stole Christmas!*.

Emily Mittleman
(Little Who Ensemble, White Group)

THE OLD GLOBE: Debut. Children's Theatre roles include: *You're a Good Man Charlie Brown* (Lucy); *The Jungle Book* (Bagheera); *Pinocchio* (Sly Fox). Emily was also a featured soloist in

(continued on next page)

Emanu-El on Broadway at the JCC. She dances competitively with The Element Dance Center and plays competitive soccer for Crusaders Soccer Club. Emily is a fifth grader at Hearst Elementary. She loves dogs, musicals, sudoku and playing football with her family.

Dallas Perry

(Little Who Ensemble, Red Group)

THE OLD GLOBE: Debut. REGIONAL: *Annie Get Your Gun* (Townsperson/Waiter/Indian), *Traditions of Christmas* (Elf/France/Hillbilly), *Anne of Green Gables* (Blewett Child), *Peter Pan* (Lost Boy), CYT (East County Performing Arts Center). Most current show was *Narnia* for CYT, where he played Edmund. Dallas is 11 years-old and in the 6th grade at Rio Seco Elementary. He enjoys singing, dancing and anything to do with performing, and one day hopes to be on Broadway.

Kayla Solsbak

(Little Who Ensemble, Red Group)

THE OLD GLOBE: Debut. REGIONAL: *Winnie the Pooh* (Rabbit), *Junie B. Jones and a Little Monkey Business* (Junie B. Jones), *Peter Pan* (Twin One/Jane), *My Emperor's New Clothes*, *Ramona "The Pest" Quimby*, San Diego Junior Theatre; *It's a Wonderful Life* (Zuzu Bailey), FC Players. Kayla is a 10-years-old 6th grader at Lakeside Middle School. She is heavily involved in academics, Girl Scouts and playing violin in her school orchestra. Her first love is writing and she hopes to someday be an author as marvelous as Dr. Seuss.

Kayla Stults

(Little Who Ensemble, White Group)

THE OLD GLOBE: Debut. Most recently Kayla played Marie's Child in *Wozzeck* with the San Diego Opera directed by Des McNuff at the San Diego Civic. REGIONAL: *Joseph... Dreamcoat*, National Tour, San Diego Civic (Children's Choir); *Wizard of Oz* (Munchkin Mayor), *Roar of the Greasepaint* (Urchin), Starlight Theatre. OTHER CREDITS: *Madeline's Christmas* (Madeline) and *Seussical* (Young Kangaroo). Kayla is 9 yrs old and has

been a song and dance soloist at several venues around San Diego. She is a Junior Girl Scout and loves to read, play the flute and hang out with her younger sister.

Celia Tedde

(Little Who Ensemble, White Group)

THE OLD GLOBE: *Dr. Seuss' How the Grinch Stole Christmas!* ('04, '05, '06). REGIONAL CREDITS: *High School Musical* (Thespian), *Hansel & Gretel* (Sally), *Rumplestiltskin* (Citizen), *Pippi Longstocking* (School Kid), *Joseph... Dreamcoat* (Dreamcoat Choir), *Seussical* (A Who), J*Company; *Stinky Cheese Man* (Ugly Stepmother), Junior Theatre; *Bugsy Malone* (Fat Sam), *Fiddler on the Roof* (Golde), *Cinderella* (Cinderella), *The Jungle Book* (King Louie), Theatre Camp; Featured guest vocalist and keyboard player with band Rockola. Celia has been playing piano for 3-1/2 years and started clarinet with her school band in 4th grade. She is currently a member of J*Company's On The Town Performance Group. She has also been featured in two independent films. Celia is a 5th-grader at San Diego Cooperative Charter School.

Jada Temple

(Little Who Ensemble, Red Group)

THE OLD GLOBE: Debut. REGIONAL: *Midsummer Night's Midterm*, *Annie*, *Friday Night Fever*, *Music Man*, *Robin Hood*, *Cinderella*, *Pirates of Penzance*, *Charlotte's Web*, Valencia Park Theatre; *The Wizard*, Casa del Prado Theatre. EDUCATION/ TRAINING: Student at Creative Performing Media Arts (C.P.M.A.); tap and jazz, City of San Diego Dance program/Paradise Valley Rec Center; Valencia Park dance labs, San Diego Junior Theatre camps.

Tommy Twomey

(Little Who Ensemble, White Group)

THE OLD GLOBE: *Dr. Seuss' How the Grinch Stole Christmas!* ('06). Eight-year-old Tommy is thrilled to return to The Old Globe as part of the 10th anniversary cast reprising his role in the Little Who Ensemble. REGIONAL: Most recently he appeared as "Chip" in Starlight Theater's production of Disney's

Beauty & the Beast. ELSEWHERE: *The Music Man* (Winthrop Paroo); CCT's *Traditions of Christmas Musical Spectacular* (Woodstock & Dash); *Beauty & the Beast* (Chip) at J Company. Other appearances: Disney's *Jungle Book* (Baby Elephant); *The Music Man*, Jr. (Ensemble). He's grateful for the opportunity to live in Who-ville this holiday season.

Timothy Mason

(Book and Lyrics)

THE OLD GLOBE: *Dr. Seuss' How the Grinch Stole Christmas!* ELSEWHERE: *Levitaton*, *Only You*, *Babylon Gardens* (with Timothy Hutton and Mary-Louise Parker), *The Fiery Furnace* (starring Julie Harris), Circle Rep; *Ascension Day*, *The Less Than Human Club*, *Time on Fire*, *Mullen's Alley*, A.C.T.'s Young Conservatory in San Francisco; Actor's Theatre of Louisville; South Coast Rep; Seattle Rep; Victory Gardens; Portland Stage; Jungle Theatre in Minneapolis; *Cannibals*, *Naked Eye* in Chicago; *Six*, Guthrie Theatre Lab. Many plays for young audiences at the Minneapolis Children's Theatre Company, including several musicals in collaboration with Mel Marvin, and the first Dr. Seuss musical, *The 500 Hats of Bartholomew Cubbins*, with composer Hiram Titus. Mason's novel, *The Last Synapsid*, a fantasy-adventure for kids, is being published by Delacorte Press.

Mel Marvin

(Composer)

THE OLD GLOBE: *Dr. Seuss' How the Grinch Stole Christmas!*, *Tintypes*. ELSEWHERE: Mel's Broadway credits include *Yentl*, *A History of the American Film*, *Tintypes* (Tony Award® nomination), *Fascinating Rhythm*, and this season, *Dr. Seuss' How the Grinch Stole Christmas!*; *Cymbeline*, Lincoln Center Theater; he has had nine shows produced off-Broadway. Other credits include scores for many of America's best-known regional theaters, including Lincoln Center Theater, Arena Stage, The Guthrie, A.R.T., La Jolla Playhouse, and the Mark Taper Forum, where he was an associate artist and wrote the original music for *Angels in America*. CURRENT PROJECTS: *Guest from the Future*, an opera with libretto by

Jonathan Levi, which had its premiere in the Summerscape program at the new Fisher Center for the Arts in July 2004; *Buwalsky*, an opera commissioned by Holland's Opera Spanga, which premiered in The Netherlands in August, 2004 and subsequently toured the U.S., with performances in New Haven and New York City. He is working on a new opera with librettist Laura Harrington, and he wrote a new score for the Guthrie Theater's *Hamlet* in March, 2006. He is head faculty composer and producing director of the Graduate Musical Theatre Writing Program at NYU's Tisch School of the Arts. *How the Grinch Stole Christmas!* is one of seven musicals for young audiences Mel has written for his daughter, Kate.

Jack O'Brien
(Conceived and Directed
Original Production)

Mr. O'Brien's biography may be found on page 31.

Benjamin Endsley Klein
(Director)

THE OLD GLOBE: *Dr. Seuss' How the Grinch Stole Christmas!* (2005), *Dirty Rotten Scoundrels*, *Compleat Female Stage Beauty* (all as Assistant Director). BROADWAY: *The Coast of Utopia*, *Dirty Rotten Scoundrels*, *Barefoot in the Park*. LONDON: West End Premiere of *Hairspray* (Associate Director). REGIONAL: *Notes to MariAnne* (Director), Eugene O'Neill Musical Theatre Conference; Company Manager at Hartford Stage Company. AWARDS: National Theatre Conference 2007 Paul Green Foundation Award; Society of Stage Directors and Choreographers 2005-2006 Mike Ockrent Fellowship. EDUCATION: BFA Degree in Directing for the University of Michigan. Benjamin lives in New York City and hails from Charlotte, North Carolina.

John DeLuca
(Original Choreographer)

FILM: *Memoirs of a Geisha*, *Chicago*, *The Terminal*. TV: *Tony Bennett: An American Classic*, 75th Academy Awards, Kennedy Center Honors. BROADWAY/NY THEATRE: *Dr.*

Seuss' How the Grinch Stole Christmas!, *Minnelli on Minnelli*, *Broadway Sings Elton John*, *Deborah Voigt on Broadway*, *Sweet Adeline* (Encores!), *Two Gentlemen of Verona* (the Public).

NATIONAL TOUR: *The Boy Friend*, *Chita* and *All That Jazz*, *Music of the Night*, *Brigadoon*.

AMERICAN STAGE CO: *Oedipus Private Eye*, *Lucky Guy*, *The Gig*. American Musical Theatre Award, Choreography Media Honors, American Choreography Award, two Emmy Awards. Currently working on the film version of *Nine*.

Bob Richard
(Additional Choreography)

Mr. Richard has been the resident choreographer for the past nine years with the Sacramento Music Circus, staging over 20 productions, such as the first-ever *Les Miz* in the round, Frank Wildhorn's 10th Anniversary production of *Jekyll and Hyde* and the world premiere of the new *Footloose*. He set the 50th anniversary production of *West Side Story* for Seattle's 5th Avenue Theatre, and has worked regionally with North Shore Music Theatre and The Old Globe. Bob was nominated for a Bay Area Critics Circle Award for his work with the American Musical Theatre of San Jose. In 2008 he will be staging *Cabaret* for a three city tour (Seattle, San Jose and St. Paul).

Ron Colvard
(Musical Director)

Ron's work spans all genres of music as a singer, pianist, arranger and orchestrator from stage to film and television. As a musical director, Ron has conducted staged events across the United States, Canada, Asia and Europe. NATIONAL TOURS: *Jersey Boys*, *Avenue Q*; Assistant Conductor for the National Tour of the Tony Award®-winning Broadway musical *Hairspray*. REGIONAL: *A Chorus Line*, *Chicago*, *Into the Woods*, *A Funny Thing Happened on the Way to the Forum*, *Sophisticated Ladies*, *Once on this Island*, *Man of La Mancha*. He is an experienced audition pianist and accompanist, having played for numerous shows, reviews, cabarets and special events, including the national tours of *Wicked*, *Movin' Out*, *Dirty Rotten Scoundrels* with Norbert Leo

Butz and *The King and I* starring Stephanie Powers. Ron is a 7-time AriZoni Award nominee and winner for Best Musical Direction for *Chicago* and *Into the Woods*. There's more to see and hear at www.roncolvard.com

John Lee Beatty
(Scenic Designer)

BROADWAY: *The Color Purple*, *Dr. Seuss' How the Grinch Stole Christmas!*, *Rabbit Hole*, *Doubt*, *The Odd Couple*, *Chicago*, *Wonderful Town*, *Dinner at Eight*, *Frankie and Johnny in the Claire de Lune*, *Morning's at Seven*, *Proof*, *Footloose*, *The Little Foxes*, *The Last Night of Ballyhoo*, *A Delicate Balance*, *The Heiress*, *Abe Lincoln in Illinois*, *Anna Christie*, *Redwood Curtain*, *The Sisters Rosensweig*, *The Most Happy Fella*, *Penn and Teller* (twice), *Burn This*, *Ain't Misbehavin'* (twice), *Talley's Folly*, *Fifth of July*, *Crimes of the Heart*. OFF-BROADWAY: *Sylvia*, *The Substance of Fire*, *Lips Together*, *Teeth Apart*, *The Road to Mecca*, *Song of Singapore*, *A Life in the Theatre*, *The Miss Firecracker Contest*, 32 seasons at Manhattan Theatre Club and Circle Rep, 12 seasons at City Center Encores!. Credits also at major regional theatres, and in film, opera and TV. Recipient of the Tony, Obie, Drama Desk, Outer Critics Circle Awards; member of the Theatre Hall of Fame. Graduate of Brown University and the Yale School of Drama.

Robert Morgan, ASSOCIATE ARTIST
(Costume Designer)

THE OLD GLOBE: Since 1977, designed scenery and/or costumes for 36 productions, among them: Last summer's *Hamlet* and *Measure for Measure*, *Moonlight and Magnolias*, *Vincent in Brixton*, *The Full Monty*, *Dr. Seuss' How the Grinch Stole Christmas!*, *A Midsummer Night's Dream* ('78 & '85), *Macbeth* ('79 & '96), *Twelfth Night* ('83 & '01), *Romeo and Juliet* ('80 & '99), and *King Lear* ('81 & '93). ELSEWHERE: New York, on and off-Broadway; London's West End; Maria Theresa's private theatre at the Schoenbrunn Palace in Vienna; regional theatres across the United States. From 1987-1992, Mr. Morgan served as Director of the Theatre Division at

(continued on next page)

Boston University's School For the Arts. He lives with his wife and four children in Vermont's rural Northeast Kingdom.

Pat Collins (Lighting Designer)

THE OLD GLOBE: *Twelfth Night*, *Cymbeline*, *Dr. Seuss' How the Grinch Stole Christmas!*. ELSEWHERE: Pat's Broadway credits include *Dr. Seuss' How the Grinch Stole Christmas!*, *Doubt*, *Sight Unseen*, *Proof*, *A Moon for the Misbegotten*, *A Delicate Balance*, *The Sisters Rosensweig*, *Conversations with My Father*, *The Heidi Chronicles*, *I'm Not Rappaport* (Tony Award), *Execution of Justice* (Drama Desk Award), the original and 1988 revival of *Ain't Misbehavin'*, *Once Upon a Mattress*, *An American Daughter* and many more. Lincoln Center credits include *Third*, *Ten Unknowns*, *Death and the King's Horseman*, *The Threepenny Opera*, *The Floating Lightbulb* and *Measure for Measure*. OFF-BROADWAY: *The Foreigner*, *Doubt*, *Burn This*, *Quartermaine's Terms*, *How I Got That Story* and *A Life in the Theatre*. She has designed lighting at theatres throughout the country, including the Mark Taper Forum, the McCarter Theatre, Berkeley Rep, Seattle Rep, Hartford Stage, Baltimore Center Stage, Long Wharf Theatre, Guthrie Theatre, Goodman Theatre, American Repertory and Actor's Theatre of Louisville. She also designed Wagner's Ring Cycle at the Royal Opera House, Covent Garden and over 100 productions for opera companies throughout the world.

Paul Peterson (Sound Design)

THE OLD GLOBE: Over 50 productions, including: *Hay Fever*, *Bell, Book and Candle*, Edward Albee's *Who's Afraid of Virginia Woolf?*, *Two Trains Running*, *Hold Please*, *Restoration Comedy*, *The Four of Us*, *Pig Farm*, *The Sisters Rosensweig*, *Trying*, *Moonlight and Magnolias*, *Vincent in Brixton*, *I Just Stopped By to See the Man*, *Lucky Duck*, *The Intelligent Design of Jenny Chow*, *Blue/Orange*, *Time Flies*, *Pentecost*, *Compleat Female Stage Beauty*, *Dr. Seuss' How the Grinch Stole Christmas!*, *The Boswell Sisters*,

Crumbs from the Table of Joy. ELSEWHERE: Centerstage, Milwaukee Rep, La Jolla Playhouse, Sledgehammer Theatre (Associate Artist), Mo'olelo Performing Arts Company, The Wilma Theatre, L.A. TheatreWorks, San Diego Repertory Theatre, Florida Studio Theatre, Lorraine Hansberry Theatre, North Coast Rep, Diversionary Theatre, Cape Fear Regional Theatre, Hope Summer Repertory Theatre, Malashock Dance & Company, The University of San Diego, San Diego State University, and the Freud Theatre at UCLA. EDUCATION: BFA in Drama with an emphasis in Technical Design from San Diego State University.

Anita Ruth (Orchestrator)

Anita Ruth is an orchestrator, arranger and musical director active in the Minneapolis/St. Paul area. She has prepared over 150 musicals in the last thirty years. She was the musical director of the Chanhassen Dinner Theaters from 1968 to 1988. Since then she has been a freelance music director and orchestrator at the Guthrie Theater, the Children's Theater, Bloomington Civic Theater and Theatre Mu among others. She has been the arranger/music director for three Shakespeare productions at the Guthrie as well as music directing their production of *Christmas Carol* for the last seven years. In 2004 she orchestrated two operas composed by Mel Marvin — one presented in Holland and the other at Bard College.

Joshua Rosenblum (Vocal Arrangements and Incidental Music)

Has conducted thirteen Broadway and off-Broadway shows, specializing in flying vehicles (*Miss Saigon*, *Chitty Chitty Bang Bang*, *How the Grinch Stole Christmas!*). He is the composer/lyricist of the off-Broadway smash hit revue *Bush is Bad*, *Ferret's Last Tango*, and *Einstein's Dreams*. As a pianist, he has appeared with the New York Pops at Carnegie Hall, and in solo recitals at Symphony Space. Faculty member: Yale University Dept. of Music.

Contributing writer: Opera News. Wonderful family: Joanne, Julian, Phoebe.

David Krane (Dance Music Arranger)

Created the dance music and additional score adaptation for the Oscar-winning movie *Chicago*, and for many shows, including *La Cage*, *Cabaret*, *Man of La Mancha*, *Oklahoma!*, *Spider Woman*, *The Music Man*, *Showboat*, *Victor/Victoria*, *Minnelli on Minnelli*, *Damn Yankees*. ORCHESTRATIONS: *She Loves Me*, *The World Goes Round*. TV: *Once Upon a Mattress*, 2003 Oscars, *Annie*, *Cinderella*, *Mrs. Santa Claus*, Kennedy Center Honors. UPCOMING: *Nine—The Film*. www.davidkrane.com.

Leila Knox (Stage Manager)

THE OLD GLOBE: Edward Albee's *Who's Afraid of Virginia Woolf?*, *Ace*, *The Violet Hour*, *Himself and Nora*, *Take Me Out*, *Dr. Seuss' How the Grinch Stole Christmas!* ('04-'06), 2004 Summer Shakespeare Festival, *Resurrection Blues*, *Bus Stop*, *Much Ado About Nothing*, *Dirty Blonde*. BROADWAY: *Dirty Blonde*, *Amour*, *One Mo' Time*. REGIONAL: Production Supervisor of the National Tour and West Yorkshire Playhouse productions of *Dirty Blonde*; *Observe the Sons of Ulster*, Lincoln Center; *Mislansky/Zilinsky or Schmucks*, *Red*, *The Memory of Water*, Manhattan Theatre Company; *All My Sons*, *The Mineola Twins*, Roundabout Theatre; *A Madhouse in Goa*, Second Stage; *Twilight*, Los Angeles, 1992, Berkeley Rep; *Alice's Adventures Underground*, *Cabin Pressure*, SITI; *Demonology*, Playwrights Horizons; *The Woman Warrior*, Huntington Theatre and Berkeley Rep; 11 seasons with the Williamstown Theatre Festival. EDUCATION: Northwestern University.

Tracy Skoczelas (Assistant Stage Manager)

THE OLD GLOBE: *A Catered Affair*, *Hay Fever*, *Two Trains Running*, *The Four of Us*, *The Times They Are A-Changin'*, Summer Shakespeare Festivals ('04-'06), *Vincent in Brixton*, *I Just*

Stopped By to See the Man, Dirty Rotten Scoundrels, The Food Chain, Two Sisters and a Piano, Bus Stop, Rough Crossing, Much Ado About Nothing, Julius Caesar, Dirty Blonde, Pentecost, Loves & Hours, Oldest Living Confederate Widow Tells All, Splendour, Pericles, All My Sons, Compleat Female Stage Beauty, Betrayal, Smash, Memoir, Dr. Seuss' How the Grinch Stole Christmas! ('01-'06), *Twelfth Night, A Midsummer Night's Dream, Henry V, The Trojan Women*. EDUCATION: BFA, University of North Carolina at Greensboro.

TELSEY + COMPANY (Casting)

BROADWAY/TOURS: *November, The Homecoming, How the Grinch Stole Christmas, Legally Blonde, The Drowsy Chaperone, The Color Purple, Wicked, Hairspray, Rent, Sweeney Todd, High School Musical*. OFF-BROADWAY: *The Fantasticks, Blue Man Group, In the Heights, Atlantic, MCC, Signature*. FILM: *Sex and the City, Dancing with Shiva, Dan in Real Life, Then*

She Found Me, Across the Universe, Ira and Abby, Rent, Pieces of April, Camp, The Grey Zone, Finding Forrester, The Bone Collector TV: *Whoopi*, HBO's *Undeclared*, commercials.

Telsey + Company, C.S.A.:
Bernie Telsey, Will Cantler, David Vaccari,
Bethany Knox, Craig Burns,
Tiffany Little Canfield, Rachel Hoffman,
Carrie Rosson, Justin Huff, Joe Langworth,
Bess Fifer, Patrick Goodwin

FOR THIS PRODUCTION Additional Staff

Assistant DirectorMichael Paternostro
Studio TeacherJudy Ridgeway
Rehearsal PianistDan Greenbush
Stage Management InternJess Bergholtz

Understudies

The GrinchRandall Dodge
Old MaxSteve Gunderson
Young MaxJames Vasquez
Papa WhoPaul Morgavo
Mama WhoAmy Biedel
Grandpa WhoRon Christopher Jones
Grandma WhoSarah Sumner

Special Thanks

Capri Shoes
Nancy Palmantier
Zoë Morsette
Tricorne, Inc.



This theatre operates under an agreement between the League of Resident Theatres and Actors' Equity Association, the union of professional actors and stage managers in the United States.

ssdc

The Directors are members of the Society of Stage Directors and Choreographers, an independent national labor union.



The Scenic, Costume, Lighting and Sound Designers in LORT Theatres are represented by United Scenic Artists Local USA-826, IATSE.



This Theatre operates under an Agreement with the International Alliance of Theatrical Stage Employees Local No. 122.

Little Who Ensemble



BACK ROW L-R: CHARISMA MCKORN, DALLAS PERRY, JADA TEMPLE, KAYLA SOLSBAK; FRONT ROW L-R: KAYLA STULTS, EMILY MITTLEMAN, CELIA TEDDE, TOMMY TWOMEY; PHOTO BY DANIEL BAIRD.

The Need for Endowment

Help Secure The Old Globe For Generations to Come

Since 1935, The Old Globe has been an integral thread in the cultural fabric of San Diego, and with increasing attendance, balanced budgets and national recognition, The Old Globe is in one of the strongest positions in its history and is poised to secure the theatre for generations to come.

The most critical long-term need at The Globe today is to grow its endowment. An endowment is a protected investment fund that earns interest, which will provide the theatre with a reliable income stream to supplement its annual ticket sales and donations.

As part of the current campaign – Securing a San Diego Landmark – the Globe is actively seeking commitments to its endowment through planned gifts, bequests and other estate planning options.

The Old Globe would be pleased to meet with you to discuss your goals for leaving a lasting gift to the theatre. Of course, you should also consult with your tax and legal advisers. We want this to be a “win/win” situation!

For more information, please contact Director of Development,
Todd R. Schultz at (619)231-1941 x2310 or
TSchultz@TheOldGlobe.org.

The following are examples of some of the many ways you can form partnerships with The Old Globe that are advantageous to you as well as to the theatre:

MAKE AN OUTRIGHT GIFT — By making outright gifts of cash, appreciated securities and real estate you will receive immediate income tax deductions and recognition of your gift at the Globe.

DONATE FROM YOUR IRA — If you are age 70 1/2 or older, you can make cash gifts to the Globe and other charities totaling \$100,000 a year from your IRA without incurring income tax on the withdrawal. Act fast to take advantage of this tax provision as it expires in 2007.

LEAVE A BEQUEST — In your will or trust, you can designate the Globe as a beneficiary and that amount will be deductible in determining your taxable estate.

CREATE A CHARITABLE TRUST — While helping the Globe, you and/or your heirs can benefit now or in the future by receiving income for life or for a period of years; you will receive an immediate charitable deduction on your income tax and will avoid capital gains taxes.

CRAIG NOEL LEAGUE MEMBERS

Planned Giving Society of The Old Globe

Anonymous (14)
Robert S. Albritton*
Diana Barliant
Nancine Belfiore
Alan Benaryoa
Dr. and Mrs. Edgar D. Canada
Garet and Wendy Clark
J. Dallas* and Mary H. Clark
R. Patrick and Sharon Connell
Patricia W. Crigler, Ph.D., CAPT/USN/Ret.
Carlos and Patricia Cuellar
Patricia and Donn DeMarce*
Mrs. Philip H. Dickinson
Dr. and Mrs. Robert Epsten
Frank A. Frye, III
Nancy Reed Gibson
Robert Gleason and Marc Matys
Marcy Goldstone
Kathryn Crippen Hattox

David and Debbie Hawkins
Craig and Mary Hunter
Barbara Iredale*
Bob Jacobs
Joseph E. Jessop*
J. Robert and Gladys H. King
Marilyn Kneeland
Jean and David Laing
Jerry Lester Foundation
Dr. Bernard Lipinsky*
Heather Manion
Calvin Manning
Chris and Jill Metcalf
Paul I. and Margaret W. Meyer
Judy and George Miller
Steve Miller
Dr. Robert W. Miner
Shirley Mulcahy
Laurie Dale Munday

Stanley Nadel and Cecilia Carrick
Alice B. Nesnow
Arthur and Marilyn Neumann
Craig Noel
Greg and Polly Noel
PACEM (Pacific Academy of
Ecclesiastical Music)
Mrs. Margaret F. Peninger*
Velda Pirtle*
Florence Borgeson Plunkert*
Dolly* and Jim Poet
Dorothy Shorb Prough*
Brenda Marsh-Rebelo and John Rebelo
Donald and Darlene Shiley
Patsy and Forrest Shumway
B. Sy and Ruth Ann Silver
Stephen M. Silverman
Roberta Simpson
Dolores and Rod Smith

John and Cindy Sorensen
Marje Spear
Nancy A. Spector and Alan R. Spector
Jeanette Stevens
Eric Leighton Swenson
Anne C. Taubman
Cherie Halladay Tirschwell
Marian Trevor (Mrs. Walter M.)*
Evelyn Mack Truitt
Ginny Unanue
Carol and Lawrence Veit
Harvey* and Jordine Von Wantoch
Merle and Phil Wahl
Holly J.B. Ward
Sheryl and Harvey P. White
Mrs. Jack Galen Whitney
Stanley E. Willis II*
Julie Meier Wright
Carolyn Yorston

*Deceased

The Old Globe Costume Shop

Most of the world sees a play only in its completed form. A good production will transport the viewer, tricking their eyes into believing in the authenticity of the created world. Hard work done by the myriad of backstage artisans is made to look effortless. Behind the scenes, everyone works laboriously to make this a reality.

The Costume Shop, housed in the lower level of The Old Globe's administrative offices, encompasses one of the largest costume departments in the nation. Most of the costumes, shoes, accessories and wigs are created right here. The creation of a costume involves many hands and many minds, beginning with the designer and the director who will meet to discuss the themes and "look" of a show. The designer will then create sketches, bring in swatches of fabric, and may bring in pictures for more contemporary designs.



The next step is research. Designers will research the look of a certain period, the types of fabrics and colors that would have been available, the cuts used for costumes and will use all of this for inspiration. The next phase involves finding the materials to make a sketch come to life. It is decided what can be pulled from our stock and what must be built from scratch. At this point, teams of drapers and stitchers, who are assigned groups of costumes and actors, will create a mock-up of the costume in muslin before creating the final piece.

A highlight of the 2007 season is the redesign of the Grinch's costume for the Globe's 10th Anniversary production of *Dr. Seuss' How the Grinch Stole Christmas!*. The Grinch costume is a challenging project for numerous reasons. First, the proportions of Dr. Seuss' original character are not human, so a body suit must be created for the character that will make him rounder and

lumpier. An added concern is that the costume is incredibly hot, so the body suit is equipped with pockets in which ice-packs can be stuffed, to help cool the actor.

Secondly, the Grinch has shaggy green hair covering his body so a hairy body suit must be created, along with feet, hands, a wig and facial hair. The hairy suit that goes over the body suit is made by taking strips of synthetic hair, which are dyed in several shades of green and then hand-sown in a variety of patterns and angles to make the hair look more natural.



2007 new Grinch costume sketch
by Robert Morgan

The wig and facial hair are created and maintained by a group of wig makers who also take different hues of hair and hand tie them in varying colors, three hairs at a time. In fact, each wig that the Globe uses is created by this team and each is custom-fitted to the actor's head and then hand-tied to create a one-of-a-kind piece.

The hands for the Grinch are constructed as gloves that are fitted with extra-long, moveable fingers to mimic Dr. Seuss' original sketch of the character. Along with the feet that are created, the gloves must also be covered in varying colors of Grinch hair to complete the look.

The process of creating a costume seems lengthy, but it often takes just six weeks to complete. What is actualized in this process is a piece of the overall vision of the play. As Stacy

Sutton, Costume Director of The Old Globe says, "Costumes add so much to a performance. Without overstating, they tell you where you are, what time you're in and how to relate to where you are."



Grandma Who sketch by Robert Morgan

Annual Fund Donors

The Old Globe's ability to maintain the highest standard of excellence, while keeping ticket prices affordable, is due in large part to the financial support of more than 3,500 individuals, businesses, foundations and government agencies. Please join us in giving a warm thanks and recognition to these leaders who have made tonight and our 625 other performances possible. The Old Globe appreciates the support of those who have stepped into the spotlight.

Benefactors

(\$100,000 and above)

City of San Diego, Commission for Arts & Culture	Irving Hughes The James Irvine Foundation Microsoft The San Diego Union-Tribune	Donald & Darlene Shiley The Shubert Foundation Supervisor Pam Slater-Price and the County of San Diego
Audrey S. Geisel/The San Diego Foundation Dr. Seuss Fund		
William Randolph Hearst Foundation		

Season Sponsors

(\$50,000 to \$99,999)

American Express The Legler Benbough Foundation California Bank & Trust J. Dallas & Mary H. Clark Fund at The San Diego Foundation Karen & Donald Cohn	Valerie & Harry Cooper Globe Guilders Joan & Irwin Jacobs Las Patronas Sheila and Jeffrey Lipinsky	Patrons of the Prado Conrad Prebys QUALCOMM, INC. Wells Fargo Sheryl & Harvey P. White
---	--	--

Production Sponsors

(\$25,000 to \$49,999)

Mary Beth Adderley-Wright, Richard Wright & Elizabeth Adderley American Airlines AT&T Bank of America Alan Benaroya John A. Berol Mary Ann Blair Fund at The San Diego Foundation	Bombardier Flexjet Cohn Restaurant Group/Prado Restaurant Continental Airlines Danah H. Fayman Jake & Todd Figi Kathryn & John Hattox HM Electronics, Inc. Deni & Jeff Jacobs	Nokia Semptra Energy Sheraton San Diego Hotel & Marina Patsy & Forrest Shumway Starbucks Coffee Union Bank of California U.S. Bank Mandell Weiss Charitable Trust
---	--	--

Director Circle

(\$10,000 to \$24,999)

Anonymous (1) Charles & Molly Brazell Arthur & Sophie Brody Fund of the Jewish Community Foundation Dale Burgett & F. George Gilman The Louis Yager Cantwell Private Foundation Deni & Ken Carpenter Peter Cooper & Norman Blachford Advised Fund at the San Diego Human Dignity Foundation Elaine & Dave Darwin Mr. & Mrs. Brian Devine Dr. & Mrs. Robert Epsten Pamela A. Farr	Hal & Pam Fuson Lee & Frank Goldberg Dr. & Mrs. Harry F. Hixson, Jr. Supervisor Bill Horn and the County of San Diego Mr. & Mrs. Neil Kjos Dr. Ronald & Mrs. Ruth Leonardi Jacquelyn Littlefield Sue & John Major Dr. Patricia Montalbano Hank & Robin Nordhoff The Kenneth T. & Eileen L. Norris Foundation Allison & Robert Price Sandra & Allen Redman	Chris Skillern Nancy & Alan Spector and Family Ms. Jeanette Stevens Anne Taubman & David Boyle Gillian & Tony Thornley Evelyn Mack Truitt Erna & Andrew Viterbi Weingart-Price Fund at The San Diego Foundation Stewart & Brenda Weissman Brent V. Woods & Laurie C. Mitchell June E. Yoder Carolyn W. Yorston Robert & Deborah Young Ellen & Tim Zinn
--	---	--

Founder Circle

(\$5,000 to \$9,999)

Lawrence G. Alldredge & Dawn Moore
Anonymous (1)
Ken & Ginger Baldwin
Jane Smisor Bastien
The Colwell Family Fund at
The San Diego Foundation
R. Patrick & Sharon Connell
Ann & John Davies
Nina & Robert Doede
Bernard J. Eggertsen & Florence Nemkov
Carol Spielman-Ewan & Joel Ewan
Alan & Pauline Fatayerji
Martha & George Gafford
Mary Ann & Arnold Ginnow
Robert Gleason & Marc Matys
Leo S. Guthman Fund
Melissa & James Hoffmann
Carol & George Lattimer
Peter & Inge Manes
Bob Martinet
Paul I. & Margaret W. Meyer
Money/Arenz Foundation, Inc.
Harle Garth Montgomery
Arthur & Marilyn Neumann
Charles Noell & Barbara Voss
Mike & Elizabeth Rabbitt
Ellen C. Revelle
Jeannie & Arthur Rivkin
Deborah Szekeley
Dixie & Ken Unruh
Pamela & Marty Wygod

PLAYWRIGHT CIRCLE

(\$2,500 to \$4,999)

Dr. & Mrs. Wayne Akeson
Gail, John & Jennifer Andrade
Dr. Bob & Jill Andres
Mr. & Mrs. Richard Baldwin
Melissa Garfield Bartell & Michael Bartell
Joan & Jeremy Berg
Perry S. Binder, MD
Paul Black
Dr. & Mrs. Edgar D. Canada
Cecilia Carrick & Stan Nadel
Carol & Rudy Cesena
Carol & Jeff Chang
Garet & Wendy Clark
Jack & Carol Clark
Ms. Heidi Conlan/
The Sahan Daywi Foundation
Susan B. Cowell
Gigi & Ed Cramer
Darlene G. Davies in memory of Lowell Davies
Mrs. Philip H. Dickinson
Noddy & Ira Epstein
Samuel I. & John Henry Fox Foundation at
Union Bank of California
Millicent & Charles Froehlich

GSG Capital Advistors, LLC/

Laura & Glenn Goodstein
Ms. Cheryl Haimsohn
Fred & Alicia Hallett
Susan & Dr. Ronald Heller
Alexa Kirkwood Hirsch
Leonard & Elaine Hirsch
Tish & Jere Horsley
Richard & Janet Hunter
Hutcheson Family Fund at
The San Diego Foundation
Al & Pat JaCoby
Mary & Russell Johnson
Dr. & Mrs. Richard L. Kahler
Bob & Gladys King
Rosalie Kostanzer & Mike Keefe
Bob & Laura Kyle
James & Pamela Lester
Merriel F. Mandell, Ph.D.
Dr. Marianne McDonald
Judy & George Miller
David & Noreen Mulliken
Tom & Lisa Pierce
Dolly* & Jim Poet
Mr. & Mrs. Matthew Pollack
John & Marcia Price Family Foundation
Brenda Marsh-Rebello & John G. Rebello
Dr. H. Warren Ross
Roberta J. Simpson
Marisa SorBello & Peter Czipott
Julie & Bob Sullivan
Jay & Diane Sweeney
Mr. & Mrs. Joseph Taft
Marilyn Elizabeth Thompson
Carol Vassiliadis
Doris & Lou Vettese
Jordine Von Wantoch
Patricia & Christopher Weil Family Foundation
Jean & Tim Weiss
Helene & Allan Ziman

CRAIG NOEL CIRCLE

(\$1,500 to \$2,499)

The Family of Richard & Mary Adams
Richard Adesso
Anonymous (3)
Edwin Bacher
Mr. & Mrs. John E. Barbey, Jr.
Diana Barliant & Nowell Wisch
Mrs. Inge Lehman Barta
Mrs. Lazare F. Bernhard
Sally & John Berry
Charles & Charlotte Bird
Cynthia Bolker & Greg Rizzi
Ronda & Stanley Breitbard
Terry & Bill Burd
Clint & Susie Burdett
Anita Busquets & William Ladd
Dr. & Mrs. Robert M. Callicott
Ruth Mary Campbell

Ellen Casey
Pam & Jerry Cesak
Mike Conley & Sue Steele
Roger Cornell, M.D.
Richard & Stephanie Coutts
Sally & Pat Crahan
Mrs. Willard T. Cudney
Dr. & Mrs. Francis C. Cushing, Jr.
Fran & Matt Dalton
Mrs. Gail Powell Davis
Pat & Dan Derbes
Dean & Mrs. Michael H. Dessent
Marion Eggertsen
Peter & Doris Ellsworth
Carol Fink
Dieter & Susan Fischer/Dieter's Mercedes Service
Mary & David Fitz
Susanna & Michael Flaster
Mr. & Mrs. Richard Ford
Sid & Jean Fox
Karen & Orrin Gabsch
Deede Gales
Elaine & Murray Galinson
Bill & Judy Garrett
Drs. Thomas H. & Jane D. Gawronski
Mr. & Mrs. Daniel Genis
Teresa C. George
Martin & Enid Gleich
Tom & Sheila Gorey
Drs. Barbara & Leonard Gosink
Dr. & Mrs. William Gott
Jay & Mary Hanson
Norm Hapke & Valerie Jacobs Hapke
Drs. Patrick Harrison & Eleanor Lynch
Salah M. Hassanein
Dr. & Mrs. Peter K. Hellwig
Rhonda Heth & Thomas Mabie
Michael & Jill Holmes
Dr. David K. Hostetler
Gary & Carrie Huckell
Roberta Hussey
Al Isenberg & Regina Kurtz
Jerri-Ann & Gary Jacobs
Daphne Jameson
Mr. & Mrs. David J. Johnson
William W. Karatz
Marge & Jerry Katleman
William & Edythe Kenton
Ken & Sheryl King
Dr. & Mrs. Ara S. Klijian
Sherry & Larry Kline
Dr. & Mrs. R.W. Klofkorn
Brooke & Dan Koehler
Ledford Enterprises Inc.
Terry & Mary Lehr
Ms. Sherrill Leist
Jerry Lester, M.D./Rosarito, Mexico
Sandy & Arthur Levinson
Jerry & Elsa Lewis
Don & Mary Jane Lincoln

Annual Fund Donors *continued*

Robin J. Lipman & Miro Stano
 Mathew & Barbara Loonin
 Maday/O'Donnell Design Collective —
 Dimitri J. Callian III & Lauren Zarobinski
 Charlie & Jackie Mann
 F. Dale & Lois Marriott
 R.J. Maus, Architects
 Tony & Nancy McCune
 Bill & Jeri McGaw
 Elizabeth & Edward McIntyre
 Harold O. McNeil
 Elizabeth Meyer
 Joel & Deirdre Mick
 Estelle & Jim Milch
 Rena Minisi & Rich Paul
 Judith & Neil Morgan
 Coralee Ann Morris
 Jan & David Mullin
 Ruth & Jim Mulvaney
 Bette Nagelberg
 Josiah & Rita Neep
 Bob Nelson & Murray Olson
 Eileen & Lawrence Newmark
 Nordstrom
 Mr. & Mrs. Victor H. Ottenstein
 Sigrid Pate & Glenn Butler
 Marcia & Jim Piper
 Martha Meade Pitzer
 Mo & Bill Popp
 Dr. & Mrs. Daniel Porte
 Joanne Powers
 Jim & Claudia Prescott
 Peggy Wynn Price
 Don & Marie Prisby
 Joseph & Jane Rascoff
 Mrs. Charlotte Rees
 Mr. & Mrs. Roger Roberts
 Nancy J. Robertson
 Rachel A. Rosenthal & Michael Liersch
 Mr. & Mrs. Charles P. Royce
 Warren & Beverly Sanborn
 Sanderson Family Donor Advised Fund at the
 Rancho Santa Fe Foundation
 Mrs. Hermeen Scharaga
 Sherry & C.A. Sheppard
 Drs. Joseph & Gloria Shurman
 Dee E. Silver, M.D.
 Alan & Esther Siman
 Dotti & Joel Sollender
 Herbert & Elene Solomon
 N.L. Stanworth in loving memory of Scott
 Nancy Steinhart & Rebecca Goodpasture
 Eugene L. & Hannah Step
 Mickey Stern
 The Tarlov Family
 Mr. & Mrs. Charles Taubman
 Cherie Halladay Tirschwell
 Gene & Celeste Trepte
 Pamela J. Wagner
 Merle & Phil Wahl

Jan Harden Webster & Raul Ortega
 Shirli Fabbri Weiss
 Michael & Penny Wilkes
 Mr. & Mrs. Harold B. Williams
 Keith J. Wong

PLATINUM

(\$1,000 to \$1,499)

Anonymous (1)
 Mr. & Mrs. Robert Beck
 Judy & Larry Belinsky
 Nicholas B. Binkley
 Drs. Gary & Barbara Blake
 H.L. & Irene Boschken
 Sandra & Harry Carter
 Jane Cowgill
 Ron & Devora Eisenberg—Great News!
 Dan & Sue Donovan
 Earl N. Feldman
 Peter & Christine Gault
 Sandra Gulden & Leon J. Goldberger
 Gulden Private Foundation
 Mr. & Mrs. Thomas M. Henry
 Suzanne & Lawrence Hess
 Drs. Sonia & Andy Israel
 Warren & Karen Kessler Fund of the
 Jewish Community Foundation
 James Klein Insurance
 Curt & Nancy Koch
 Dr. Eric Lasley
 Dr. & Mrs. James E. Lasry
 Joy & Ronald Mankoff
 Jasna Markovac & Gary Miller
 Akiko Charlene Morimoto &
 Hubert Frank Hamilton, Jr.
 Rod & Barbara Orth
 Parker & Crosland, LLP
 Susan Parker
 William & Sandra Peavey
 Deborah B. Pettry
 William & Susane Roberts
 Don & Darlene Russell
 Cheryl & Frank Ruyak
 Jackie Johnston-Schoell
 Alice & Lewis Silverberg
 Stan & Anita Ulrich
 Pat & Allen Weckerly
 James & Ellen Weil
 The Grey White Family Fund
 Brendan M. & Kaye I. Wynne
 Dr. Joseph Yedid & Susan Sincoff
 Christy & Howard Zatkin

GOLD

(\$500 to \$999)

Anonymous (4)
 Arthur Family Fund at The San Diego Foundation
 Rhoda & Mike Auer
 Mr. & Mrs. David A. Baer
 Shawn & Jennifer Baker

Ina S. Bartell
 Jack & Dorothy Baser Foundation
 Richard & Linda Basinger
 Lee & Amnon Ben-Yehuda
 Joyce & Bob Blumberg
 Mrs. Suzanne I. Bond
 Mrs. Wyloma Bradshaw
 Mrs. Henri Brandais
 Mr. & Mrs. Blaine A. Briggs
 Dr. & Mrs. Simon C. Brumbaugh, Jr.
 Beth & Tim Cann
 Greg & Loretta Cass
 Ray & Shelley Chalupsky
 Lynne Champagne & Wilfred Kears
 Doug & Elisabeth Clark
 Steve & Carolyn Conner
 Ronald D. Culbertson
 A.W. Dibelka
 Dr. Donald & Eileen Dose
 Patricia Eichelberger
 William Eiffert & Leslie Hodge
 Peggy Elliott
 Dr. Susan Dersnah Fee
 Richard & Beverly Fink Family Foundation
 Dr. & Mrs. Frederick A. Frye
 Sally Fuller
 Theresa & Craig Georgi
 Arthur & Judy Getis
 The Golemb Family
 Louise & Doug Goodman
 Drs. Thomas L. & Cynthia L. Goodman
 Robert & Edry Goot
 Chris Graham & Michael Albo
 Carol & Don Green
 Dr. Charles Grimshaw
 Richard & Candace Haden
 Linda E. Hanson
 Alex & Mary Hart
 Stephanie & Scott Herman
 Arnie & Barbara Hess
 Mr. Stephen Hopkins & Dr. Carey Pratt
 Steven & Nancy Howard
 Viviana Ibanez
 Isabella Fund at The San Diego Foundation
 Dr. Clyde W. Jones
 Kathy & Rob Jones
 Kenneth & Marilyn Jones
 Andrew & Denise Kaplan
 Patricia & Alexander Kelley
 Mr. & Mrs. Kevin Kiernan
 Helen & Webster Kinnaird
 Gayle & Jerry Klusky
 Jo Ann & Lee Knutson
 Bill & Linda Kolb
 Jeri Koltun
 LABS, Inc./Silvia Dreyfuss
 John Q. Lalas, Jr.
 Janet & Dan La Marche
 Thomas Leighty
 Mr. Richard Levi

Sherry & Rick Levin
 Marc C. Lorenzo
 Dr. & Mrs. Leeland M. Lovaas
 Dr. & Mrs. David D. Lynn
 Edward H. & Nancy B. Lyon
 Dr. Carl Maguire & Margaret Sheehan
 Brian C. Malk & Nancy H. Heitel Fund at
 The San Diego Foundation
 Dr. Robert & Marcia Malkus
 Jeanne Maltese
 Ron & Mercy Mandelbaum
 Christopher Maxin & Stephanie Buttell-Maxin
 Dr. & Mrs. M. Joseph McGreevy
 Keith & Lesley McKenzie
 Mr. & Mrs. William McKenzie
 Theodore A. Milby
 Joel, Annette & Arianna Millman
 Carol & Michael Morris
 Tom & Doris Neuman
 Katherine Newton
 Jack & Virginia Oliver
 Mr. & Mrs. David J. Pettitt
 Dr. Ken Pischel & Dr. Katherine Ozanich
 Dr. Julie Prazich & Dr. Sara Rosenthal
 Mr. & Mrs. Kedar Pyatt
 Elaine Rendon
 Joseph W. Robinson
 Stuart & Linda Robinson
 Mr. Joseph Rusche
 Dr. Joseph & Carol Sabatini
 Barbara A. Sawrey
 John & Patricia Seiber
 Ms. Debbie Seid
 Richard Shapiro & Marsha Janger
 Drs. Lawrence & Miriam Sherman
 Mr. & Mrs. Randall Silvia
 Rodney & Dolores Smith Fund at
 The San Diego Foundation
 Gloria Penner Snyder & Bill Snyder
 Sharon S. Storey
 Ron & Susan Styn
 Edward D.S. Sullivan
 Clifford & Kay Sweet
 Tracy Tajbl & Neil Kent Jones
 Mrs. Terry Tidmore
 Mr. & Mrs. Jeffrey C. Truesdell
 Ms. C. Anne Turhollow & Mr. Michael Perkins
 Jo & Harold Weiner
 Janice Weinrick
 Mr. & Mrs. David Weinrieb
 Dennis & Carol Wilson
 Elizabeth Zeigler & Bernard Kuchta

SILVER

(\$250 to \$499)

Mr. Gale Acker & Dr. Nancy Acker
 George Amerault
 Mr. & Mrs. Thomas Anderson
 Anonymous (6)
 Antique Row Café - Normal Heights

Drs. Michael & Gabriela Antos
 Robert W. Arnhym
 Earl Asbury
 John & Elizabeth Bagby
 Mr. Allen & Mrs. Nancy Bailey
 Beverly Bartlett & Barbara Sailors
 James & Ruth Batman
 Sharon & Bill Beamer
 Bruce & Patricia Becker
 Bee Best Bee Removal, Inc.
 Edgar & Julie Berner
 Armand Bernheim, Jr.
 Joan Bernstein
 Thomas Bilotta & Family
 Mr. & Mrs. Stanley Birstein
 Daniel & Barbara Black
 Bruce & Linda Blakley
 Robert Blanton & Ann Clark
 Joann Boone & Nancy Danniger
 Dr. & Mr. Cecelia Brock
 Ed Brookins
 Perla Brownlie
 Beth Bruton
 Barbara Bry & Neil Senturia
 Mr. Glenn Buberl
 David Burns & Diane Lischio
 Helen M. Caldwell
 Jane Carrigan
 William & Shirley Carrington
 Luc & Ann Marie Cayet-Pleska
 Chateau du Meow
 Glenn Currie Photography
 John Davis & Bill Hughes
 Mr. & Mrs. Homer Delawie
 Dutch & Dawn Dershem
 Patricia & Glen Doughty
 Sean & Kellie Doyle
 Stephen & Sandra Drew
 Lizbeth Ecke & David Meyer
 Barbara & Dick Enberg
 Richard & Donna Ferrier
 Larry & Jan Ford
 Clare & Paul Friedman
 Randee & Richard Friedman
 Charles & Jeanne Gahagan
 Estephan A.G. Gargost
 Ferdinand Gasang
 Thomas Gass, DDS & Chester McLemore
 David & Marcia Gill
 Norman & Patricia Gillespie
 Dr. & Mrs. Michael Goldbaum
 Howard & Carole Goldfeder
 Euvoughn L. Greenan
 Mr. & Mrs. Arthur A. Greenberg
 Jerome & Anita Gutkin
 Margaret Hall
 Helen M. Hammond
 Robert M. & Helen M. Hansen
 C. Harbordt
 Joel Harms

James & Ruth Harris of the
 Jewish Community Foundation
 Mrs. Corrine M. Harvey
 Joan Henkelmann
 Mr. & Mrs. Stanley Herskovitz
 Donald J. Hickey
 Christine B. Hickman & Dennis A. Ragen
 Mr. & Mrs. Thomas O. Hippie
 John & Peggy Holl
 Paul & Barbara Holz
 Nancy & Bill Homeyer
 Bonnie & Cecil Hornbeck
 Mr. & Mrs. Lee Horowitz
 Kendyl & Merri Houdyshell
 In Memory of Ray Howard
 Robert Hyman
 Joseph & Donna Hynes
 Nancy B. & David A. James
 Edward & Linda Janon
 Lucy & Jones Jaworski
 Cameron Jay & Kathleen Rains
 In Memory of Donald Jenkins
 Judge & Mrs. Anthony C. Joseph
 James & Sharon Justeson
 Gail Kendall
 Kathleen Kim & Zachary Rattner
 Remik Kolodziej & Steven Daris
 Mr. & Mrs. Jay Kranzler
 Mr. & Mrs. Albert W. Krasnoff
 Marvin M. Kripps, M.D.
 Lou Krueger
 Janay Kruger
 Betty & Richard Kuhn
 Elizabeth Lasley
 Dixon & Pat Lee
 Tom & Terry Lewis
 Roy & Carol Long
 Judge & Mrs. Frederick Mandabach
 Patricia Manning
 Kathleen Markham
 Harold & Beverly Martyn
 Bruce & Brenda Mason
 Cdr. & Mrs. John C. Mathews III
 Ronald McCaskill & Robyn Rogers
 Oliver McElroy & Karen Delaurier
 Teresa McEuen
 John Paul McHugh
 Steve McIntee
 Charles & Billie McKnight
 Mr. & Mrs. Jim Melcher
 Drs. John Meyers & Betty Joan Maly
 Dr. & Mrs. Paul E. Michelson
 James & Dorothy Mildice
 Dr. James & Mrs. Nancy Miller
 Charles W. Mills, Jr.
 Dr. Isaac & Mrs. Nancy Mizrahi
 Dr. & Mrs. Robert Morrison
 Susan & Charles Muha
 Michael & Danna Murphy
 Joyce & Martin Nash

Annual Fund Donors *continued*

Harvey & Marsha Netzer
Mr. & Mrs. J. Gregory Noel
Floyd T. Olson
Dr. David & Elizabeth Ostrander
Carolann Pagliuso
Ed & Carolyn Parrish
Julius J. Pearl Fund at The San Diego Foundation
In Memory of Margaret Peninger
Clifford T. Pentrack & Mary E. Giovaniello
Mr. & Mrs. James Perley
Lawrence Roy Perrin
Barbara Pricola
Mr. & Mrs. Merlin Puck
John Quesenberry
Anne Ratner
Mr. & Mrs. Leslie D. Reed
Robert & Doris Reed
Daniel & Lynn Reisfeld
Brent & Bev Robinson
Clarice & Irl Robinson
Milton & Dorothy Roll
Gerald & Ruth Rosenbaum
Ursula R. Roth
Dr. Norman & Barbara Rozansky
Peter & Donna Russell
Fran & Tom Ryan
George & Karen Sachs
Patrick Sammon & Mark Munsey
Josiah & Abigail Sand
James M. Santora & Dr. Daniel D. Sewell
Simon & Ruth Sayre
Dr. & Mrs. Roger H. Schmitt

Martin & Connie Schroeder
RAdm. & Mrs. H. James T. Sears
Linda J. Seifert
Lori Severson & Eric Longstreet
Glenda Allen Shekell
Hano & Charlotte Siegel
Jerry & Beth Silverman
Eunice M. Simmons, M.D.
Anne & Ronald Simon
Christopher & Carmen Skipworth
Kathryn & Terrence Slavin
Patti Sloan in honor of Jack Sloan
Charles & Julie Smith
Lance & Arlene Smith
Norman & Judith Solomon
Bill & Barbara Sperling
Fred & Christine Stalder
Alan M. Stall
Paul & Janet Stannard
Mark & Dale Steele
Ann & Robert Steiner
James K. Stenderup
Dave & Jan Stormoen
Helga & Sam Strong
Abbe Wolfsheimer Stutz
John & Linda Sunkel
Mrs. J.B. Swedelius
Donald & Margaret Sweimler
Dr. Blake S. & Mrs. Peggy Jean Talbot
Dr. Terry & Naomi Tanaka
Mr. Harold S. Taxel
Dr. Marshall & Leila Taylor

Linda Terramagra
Mr. & Mrs. Jack E. Timmons
Ned A. Titlow
Douglas & Lynn Todd
Mr. & Mrs. John Torell
Robert C. & Melesse W. Traylor
Bill & Barbara Ward
Kathy & Jim Waring
Mr. & Mrs. James Welterlen
Ross & Barbara White
Sandy Wichelecki
Cass Witkowski Family
Mr. & Mrs. John W. Witt
Dr. Perri L. Wittgrove
Janet Wolf
Mr. & Mrs. H.D. Wolpert
David Workman
M.J. Zahnle
Paul & Claudia Zimmer
Vicky Zollweg & J. Michael Dunteman

This list is current as of October 26, 2007

To learn more about supporting The Old Globe's performances and education and outreach programs, please visit our website at www.TheOldGlobe.org or call Courtney Quinn at (619) 231-1941 x2311.

Globe Ambassadors

Lawrence G. Alldredge and Dawn Moore
Perry S. Binder, M.D.
Paul Black
Dr. and Mrs. Edgar D. Canada
Carol and Rudy Cesena
Jack and Carol Clark
Mary H. Clark
Steven J. Cologne
R. Patrick and Sharon Connell
Susan B. Cowell
Gigi and Ed Cramer
Darlene G. Davies
Mrs. Philip H. Dickinson
Nina and Robert Doede
Marion Eggertsen
Bernard J. Eggertsen and Florence Nemkov
Danah H. Fayman

Susanna and Michael Flaster
Mary Ann and Arnold Ginnow
Alexa Kirkwood Hirsch
Leonard and Elaine Hirsch
Al and Pat Jacoby
Mary and Russell Johnson
Bob and Gladys King
Rosalie Kostanzer and Mike Keefe
Bob and Laura Kyle
James & Pamela Lester
Merriel F. Mandell, Ph.D.
Peter and Inge Manes
Bob Martinet
Dr. Marianne McDonald
Paul I. and Margaret W. Meyer
David and Noreen Mulliken
Charles Noell and Barbara Voss

Jeannie and Arthur Rivkin
Dr. H. Warren Ross
Donald and Darlene Shiley
Roberta J. Simpson
Ms. Jeanette Stevens
Dixie and Ken Unruh
Doris and Lou Vettese
Jordine Von Wantoch
June E. Yoder

Globe Ambassadors are generous supporters of The Old Globe who attend special presentations about activities at the Globe and serve as the Theatre's Ambassadors in the community.

For more information please contact Marilyn McAvoy at (619) 231-1941 x2309.

Special Thanks to our Corporate Donors

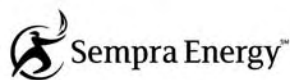
SEASON SPONSORS

(\$50,000 and more)



PRODUCTION SPONSORS

(\$25,000-\$49,999)



DIRECTOR CIRCLE

(\$10,000-\$24,999)

Break-Away Tours
Cyberknife Centers of San Diego, Inc./
Radiation Medical Group
Evans Hotels

Fashion Valley
Higgs, Fletcher & Mack, LLP
KPMG, LLP
Mercer

Neiman Marcus
ResMed Foundation
Torrey Pines Bank
Vistage

FOUNDER CIRCLE

(\$5,000-\$9,999)

Citigroup Foundation/Smith Barney
Northern Trust
San Diego Business Journal
Sycuan Resort & Casino
The Westgate Hotel
XLNC1

PLAYWRIGHT CIRCLE

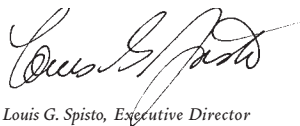
(\$2,500-\$4,999)

Cush Family Foundation
GSG Capital Advisors, LLC
Mission Federal Credit Union
Nicholas-Applegate
Seltzer Caplan McMahon Vitek
WD-40 Company

Corporate Partners enjoy exclusive benefits and recognition, especially the opportunity to entertain clients and employees with exclusive receptions in our Patron and Lipinsky Family Suites, behind-the-scenes tours, and preferred seating at our shows. For information, please contact Todd Schultz at (619) 231-1941 x2310.

Associate Artists of The Old Globe

In recognition of their unique contribution to the growth of The Old Globe and their special talent, we take great pride and pleasure in acknowledging as ASSOCIATE ARTISTS OF THE OLD GLOBE, the following who have repeatedly demonstrated by their active presence on our stages and in our shops, that wherever else they may work, they remain the heart and soul of this theatre.



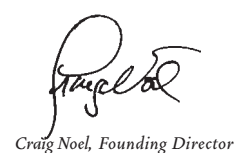
Louis G. Spisto, Executive Director



Jack O'Brien, Artistic Director



Jerry Patch, Resident Artistic Director



Craig Noel, Founding Director

William Anton
Jacqueline Brooks
Lewis Brown
* Victor Buono
* Wayland Capwell
Kandis Chappell
* Eric Christmas
George Deloy

Tim Donoghue
Richard Easton
Tovah Feldshuh
Monique Fowler
Ralph Funicello
Lillian Garrett-Groag
Harry Groener
A.R. Gurney

Joseph Hardy
Mark Harelik
Bob James
* Peggy Kellner
Tom Lacy
Diana Maddox
Dakin Matthews
Deborah May

Katherine McGrath
John McLain
Jonathan McMurtry
Stephen Metcalfe
Robert Morgan
* Ellis Rabb
Steve Rankin
Marion Ross

Steven Rubin
Ken Ruta
Douglas W. Schmidt
Seret Scott
David F. Segal
Richard Seger
Diane Sinor
Don Lee Sparks
David Ogden Stiers

Conrad Susa
Deborah Taylor
* Irene Tedrow
Sada Thompson
Paxton Whitehead
James Winker
Robert Wojewodski
* G Wood
* in memoriam

Patron Information

TICKET SERVICES HOURS

Monday: noon – 6pm

Tuesday - Sunday: noon – last curtain

Hours subject to change. Please call ahead.

Phone (619) 23-GLOBE or (619) 234-5623

FAX (619) 231-6752

Email Tickets@TheOldGlobe.org

ADMINISTRATION HOURS Monday - Friday: 9am – 5pm

PHONE (619) 231-1941

WEBSITE www.TheOldGlobe.org

ADDRESS The Old Globe

P.O. Box 122171

San Diego, CA 92112-2171

ORDERING TICKETS/CHANGE OF ADDRESS

The Old Globe accepts Visa, Discover, MasterCard, or American Express. Phone orders for non-subscribers are subject to a \$3 per ticket service charge, not to exceed \$12. Ticket exchanges are subject to a service charge for non-subscribers. If you have moved, please notify the Ticket Services Office to update our records. Call (619) 234-5623 during Ticket Services hours, mail your change of address to the Ticket Services Office, or email us at Tickets@TheOldGlobe.org.

UNABLE TO ATTEND?

If you find you are unable to use your tickets, please give them to a friend, or turn them in to the Ticket Services Office and receive a tax receipt for your donation. Tickets must be received by show time.

RESTROOMS AND TELEPHONES

Restrooms are located in the lower lobby of the Old Globe Theatre and adjacent to the Festival Theatre; pay phones may be found in the lower Globe Theatre lobby and next to the Gift Shop.

SEATING OF LATECOMERS

Although we understand parking is often at a premium, the seating of latecomers is extremely disruptive. Latecomers may be given alternative seating and will be seated at an appropriate interval.

YOUNG CHILDREN

Children three years of age and under will not be admitted to performances.

ELECTRONIC DEVICES AND CAMERAS

Use of recording devices and cameras is not permitted. If you are wearing a digital watch or pager, or if you are carrying a cellular phone, please silence it prior to entering the theatre.

SENNHEISER® LISTENING SYSTEM

For the convenience of the hearing impaired, the Sennheiser® Listening System is available in the Old Globe Theatre. Lightweight headsets may be obtained from the house manager prior to performances, free of charge.

PUBLIC TOURS

Go behind the scenes at The Old Globe to learn about the history, three stages, shop and craft areas. Open tours: most Saturdays and Sundays at 10:30am. Groups by reservation. \$5 adults; \$3 seniors and students. Phone (619) 231-1941 x2142 for information/reservations.

LOST AND FOUND

If you have misplaced a personal item while at the theatre, please contact the Ticket Services Office or Security as soon as possible. If we are unable to locate your item, we'll happily take down your contact information as well as a description of the item and contact you if it is found. The Old Globe does not assume liability for items left behind on premises.

Natural Herb Cough Drops - Courtesy of Ricola USA, Inc.
available upon request. Please ask an usher.

Director Profiles



LOUIS G. SPISTO
Executive Director

Louis G. Spisto has served as Executive Director of The Old Globe since October 2002. During his tenure, Spisto spearheaded the return of the Globe's acclaimed Shakespeare Repertory Season and produced several world-premiere plays and musicals, including *Dirty Rotten Scoundrels*, *Chita Rivera: The Dancer's Life*, and the Twyla Tharp/Bob Dylan musical, *The Times They Are A-Changin'*, which transferred to Broadway in September, 2006, along with the Globe's annual holiday favorite, *Dr. Seuss' How the Grinch Stole Christmas!*. In March, 2006, Spisto spearheaded the launch of the Globe's Capital Campaign, "Securing a San Diego Landmark," to raise \$75 million by the Theatre's 75th anniversary in 2010. The campaign is off to a hugely successful start, having reached 61% of its goal. During the past four seasons, the organization has grown its subscription audience an unprecedented amount, countering a trend in the non-profit theatre industry, resulting in the highest level of attendance in over a decade. Prior to coming to the Globe, Spisto served as the Executive Director of American Ballet Theatre in New York City. While there, he increased ticket income and annual contributions for the organization by nearly 20 percent. He also tripled the Ballet's touring weeks and the resources devoted to education and training programs. Spisto has also served as the President of the Detroit Symphony Orchestra, where he provided fundraising leadership and creative direction for the orchestra's \$60 million renovation project, and helped dramatically increase ticket sales while initiating several new series for the orchestra. Spisto established a reputation as a superb arts executive here in California, where he spent over ten years as the Executive Director of the Pacific Symphony Orchestra in Orange County. During his tenure there, he tripled the orchestra's annual budget, all while eliminating a prior deficit and successfully completing the orchestra's first endowment campaign. In addition, he established a series of innovative recording projects with Sony Classical and oversaw a number of nationally recognized commissioning projects. A strong advocate of arts education, Spisto built one of the largest and most respected music training and outreach efforts. During his career, Spisto has also served as Director of Marketing for the Pittsburgh Symphony Orchestra and Director of Operations and Development for the Performing Arts Center, UC Berkeley. He holds a Masters degree from the University of Wisconsin in Arts Administration and a Bachelors of Business Administration from the University of Notre Dame, and spent many years acting, directing and producing plays and musicals throughout his student days, as well as in professional summer theatre.



JERRY PATCH
Resident Artistic Director

Jerry Patch was appointed Resident Artistic Director of The Old Globe in February 2005. He most recently served as the Dramaturg and a member of the long standing artistic team at Southern California's Tony Award®-winning South Coast Repertory (SCR), where he coordinated the development of 150 new plays, including two Pulitzer Prize winners and numerous other finalists. Patch became the top choice for this new role at the Globe due to his many years of artistic accomplishments, his exceptional relationships with the nation's leading directors and playwrights, and his enthusiastic commitment to new work. While at SCR, Patch worked as Dramaturg on numerous new works, including Donald Margulies' *Sight Unseen* and *Brooklyn Boy*, which opened to critical acclaim on Broadway; Margaret Edson's Pulitzer Prize-winning *Wit*; Howard Korder's *Search and Destroy*; Amy Freed's *The Beard of Avon*, *Safe in Hell* and *Freedomland*; Lynn Nottage's *Intimate Apparel* and nine world-premieres by Richard Greenberg, including *Three Days of Rain*. In addition, he co-conceived *The Education of Randy Newman* with Michael Roth and Mr. Newman. Patch also served as the project director of SCR's renowned Pacific Playwrights Festival, which annually introduces seven new plays to an audience of national theatre leaders. Typically, more than 75% of the plays presented receive multiple productions in theatres across the country. During his tenure at SCR, Patch also held the position of Artistic Director (1990-1997) of The Sundance Theatre Program, which included the Sundance Playwrights Laboratory, one of the nation's leading new play development programs. Additionally, he ran the Sundance Summer Theatre, a repertory of 2-3 productions staged outdoors for Utah audiences and The Sundance Children's Theatre, which is dedicated to the development and presentation of new works for family audiences by leading American playwrights. He also serves as Consulting Dramaturg for New York's Roundabout Theatre Company.



JACK O'BRIEN
Artistic Director

Mr. O'Brien has been the Artistic Director of The Old Globe in San Diego since 1982. Recent Globe productions: *Dirty Rotten Scoundrels*, *Imaginary Friends*, *Twelfth Night*, *The Full Monty*, *The Seagull*, *The Magic Fire*, *Dr. Seuss' How the Grinch Stole Christmas!*, the world premieres of Associate Artist A.R. Gurney's *Labor Day* and Tina Howe's *Pride's Crossing*, as well as *Time and Again*, *The Doctor Is Out (Getting Away With Murder)* by Stephen Sondheim and George Furth, plus productions of *Henry IV*, *Much Ado About Nothing*, *Oleanna*, *Damn Yankees*, *King Lear*, *Ghosts*, *Hamlet*, *Uncle Vanya*, and world premieres of Terrence McNally's *Up in Saratoga*, A.R. Gurney's *The Snow Ball* and *The Cocktail Hour*, Tom Dulack's *Breaking Legs*, Stephen Metcalfe's *Emily*. BROADWAY: Creator/Supervisor, *Dr. Seuss' How the Grinch Stole Christmas!*, *The Coast of Utopia* (2007 Tony Award® for Best Direction of a Play, which won a total of 7 Tony Awards, including Best Play), *Dirty Rotten Scoundrels* (Tony nominations: Best Director and Musical), *Henry IV* (Tony Award), *Hairspray* (Tony Award), *The Invention of Love* (Tony nominations: Best Director and Play), *The Full Monty* (Tony nominations: Best Director and Musical), *More to Love*, *Labor Day*, *St. Louis Woman*, *Pride's Crossing*, *The Little Foxes*, *Happgood* (Lucille Lortel Award for Direction, 1995), *Damn Yankees* (Tony nomination: Best Musical Revival), *Two Shakespearean Actors* (Tony nominations: Best Director and Play), *Porgy and Bess* for Houston Grand Opera and Broadway (Tony Award), as well as Radio City Music Hall. ELSEWHERE: *The Magic Flute*, San Francisco Opera; *Tosca*, Santa Fe Opera; *Così fan Tutte* and *Aida*, Houston Grand Opera; *The Most Happy Fella*, Michigan Opera and Broadway. TV: *An Enemy of the People*, *All My Sons*, *I Never Sang for My Father*, *Painting Churches* and *The Skin of Our Teeth*, all for PBS's American Playhouse. RECENT AWARDS: 2004 Thomas DeGaetani Award (USITT), 2002 "Mr. Abbott" Award (SDCF), 2001 Joan Cullman Award for Extraordinary Creativity, 2001 Joe A. Callaway Award (SDCF), the Drama League's Julia Hansen Award for Excellence in Directing, 2001. Honorary Doctor of Humane Letters, University of San Diego. Mr. O'Brien is a member of the College of Fellows of the American Theatre.

Staff

Louis G. Spisto
Executive Director

Jack O'Brien
Artistic Director

Jerry Patch
Resident Artistic Director

Craig Noel
Founding Director

Michael G. MurphyGeneral Manager
Dave HensonDirector of Marketing
and Communications
Todd SchultzDirector of Development
Mark SomersDirector of Finance
Richard SeerDirector of Professional Training
Robert DrakeDirector of Production
Roberta Wells-FamulaDirector of Education
Darko TresnjakArtistic Director, Shakespeare Festival

ARTISTIC

Samantha BarrieArtistic Coordinator
Kim Montelibano HeilLiterary Associate
Jan GistVoice and Speech Coach
Bernadette HobsonArtistic Assistant

Stage Management

Leila KnoxProduction Stage Manager
Tracy SkoczelasAssistant Stage Manager

PRODUCTION

Debra Pratt BallardAssociate Director of Production
Ellen DieterCompany Manager
Carol DonahueProduction Coordinator

Technical

Benjamin ThoronTechnical Director
Wendy BerzanskyAssistant Technical Director
Kacie Lyn HultgrenResident Design Assistant
Eliza KorshinTechnical Assistant/Buyer
Christian ThorsenStage Carpenter/Flyman, Globe
Carole PayetteCharge Scenic Artist
Adam BernardScenic Artists
Mike HarrisMaster Carpenter
Robert DoughertyMaster Carpenter, Festival
William Barron, Sheldon Goff, Gillian Kelleher, Jason McIntyre,
Laura McEntyre, Mongo Moglia, Mason Petersen ..Carpenters

Costumes

Stacy SuttonCostume Director
Charlotte DevauxResident Design Assistant
Maureen Mac NiallaisAssistant to the Director
Shelly WilliamsDesign Assistant/Shopper
Gwen Dunham, Louise M. HermanDrapers
Babs Behling, Gloria Bradford,
Anne Glidden GraceAssistant Cutters
Mary Miller, Sarah Hendel, Nancy LiuStitchers
Teri TavaresDyer/Painter
Judith CraigoLead Crafts Artisan
Stephanie ParkerCraft Artisan
Molly O'ConnorWig and Makeup Supervisor
Kim ParkerAsst. to Wig and Makeup Supervisor
Erin SchindlerWardrobe Supervisor
Kristen Bongiovanni, Nikki Gillman, Marcella Hammond,
Sarah Hendel, Ana Maldonado, Jasmin Mellado, Beth
Merriman, Nola WalkupGlobe Run Crew
Marie JezberaRental Agent

Properties

Neil A. HolmesProperties Director
Amy ReamsProperties Buyer
Pat CainProperty Master, Globe
David BuessProperty Master, Carter
M.H. SchrenkeisenShop Foreman
Rory MurphyLead Craftsman
Ryan Buckalew, Kristin Steva Campbell,
Patricia RutterCraftspersons

Lighting

Chris RynneLighting Director
Megan FonsecaLighting Assistant
Tonnie FickenMaster Electrician, Globe
Jim DoddMaster Electrician, Carter
Kevin LiddellMaster Electrician, Festival
Todd Adams, Elizabeth Burress, Jason Bieber, Bonnie
Breckenridge, Maureen Hanratty, Justin Hobson, Jennifer
Horowitz, Shawna Kyees, Molly Mande, Michael Paolini, Katie
Reynolds, Chris Walsh, Amanda ZieveElectricians
Michelle Echeverria, Kristen FloresGrinch Followspots
Sound
Paul PetersonSound Director
Erik CarstensenMaster Sound Technician, Globe
Rachel EavesMic Runner, Globe

ADMINISTRATION

Darla LopezExecutive Assistant
Brian UleryAssistant to the General Manager
Information Technology

Dean YagerInformation Technology Manager
Thad SteffenInformation Technology Asst. Mgr.
J. Adam LathamInformation Technology Assistant

Human Resources

Sandra PardeHuman Resources Director
Maintenance
Chad OakleyFacilities Manager
Violanda Corona, Ismael Delgado, Miguel Gaspar, Roberto
Gonzalez, Reyna Huerta, Margarita Meza, Jose Morales, Albert
Rios, Maria Rios, Nicolas TorresBuilding Staff

PROFESSIONAL TRAINING

Lance BowerProgram Coordinator
Maria Carrera, Cynthia Caywood, Sabin Epstein, Robert
Barry Fleming, Gerhard Gessner, Jan Gist, Peter Kanelos, Fred
Robinson, Liz ShipmanMFA Faculty
Corey Johnston, Robin Sanford Roberts,
Ben Seibert, George YéMFA Production Staff

EDUCATION

Raúl MoncadaEducation Associate
Holly WardTour Coordinator
Carol GreenSpeakers Bureau Coordinator
Marisela De la Parra, Kimberly Parker Green, Janet Hayatshahi,
Sarah Price, David TierneyTeaching Artists

FINANCE

Paula NickodemusSenior Accountant
Dana M. BryantAccounts Payable/Accounting Assistant
Angela YoshidaPayroll Coordinator/Accounting Assistant
Tim ColeReceptionist

DEVELOPMENT

Annamarie MaricleAssociate Director,
Institutional Grants
Marilyn McAvoyAssociate Director,
Major Gifts
Eileen A. PrisbyEvents Manager
Courtney QuinnDevelopment Coordinator,
Individual Annual Giving
Diane AddisMembership Administrator
Diana SteffenDevelopment Assistant

Donor Services

Babs Behling, Michelle Kareiva, Barbara Lekes, Richard Navarro,
Stephanie Reed, Judy ZimmermanSuite Concierges

MARKETING

Becky BiegelsenPublic Relations Director
Ed HofmeisterAudience Development Manager
Jackie AndersonPublications Coordinator
Claire KennellyMarketing Assistant
Samantha HaskinsPublic Relations Assistant
Judy ZimmermanMarketing/Events Assistant
Erica DeiGraphic Designer
Craig SchwartzProduction Photographer

Subscription Sales

Scott CookeSubscription Sales Manager
Russ Allen, Anna Bowen-Davies, Arthur Faro, Andy Fink,
Randi Hawkins, Steven Huffman, Pamela Malone, Jessica
Morrow, Ken Seper, Cassandra Shepard, Grant Walpole,
Andrea Leigh WalshSubscription Sales
Representatives

Ticket Services

Shari ResselTicket Services Manager
Marsi RocheTicket Operations Manager
Lyle WilsonTicket Services Supervisor/
Training Coordinator

Josh Martinez-NelsonGroup Sales Coordinator/
Ticket Services Supervisor

Shouna ShoemakeLead Ticket Services Representative
Brian Adams, Kevin Armento, Elizabeth Brown,
Tony Dixon, Taylor Embree, Mame Gile, Renetta Happé,
Gunter Kursor, Alicia Lerner, Jimil-Anne Linton,
Jenna Long, Cassie Lopez, Caryn Morgan, Carlos Quezada,
Gary Rachac, Jessica Seaman, Brandon Smithely,
Molly WilmotTicket Services Representatives

PATRON SERVICES

Mike CallawayTheatre Manager
Danielle BurnettFront of House Assistant
Merlin D. "Tommy" ThompsonPatron Services Rep.
Rob Novak, Ashley RobertsHouse Managers
Dana JuhlFood and Beverage Manager
Haydee AldasFood and Beverage Assistant Manager
Michelle Elliott, Brandi Mahan, Anne-Marie Shafer,
Tess Thompson, Chris Thomas, Felicia TobiasPub Staff
Babs Behling, Rose Espiritu, Stephanie Rakowski,
Stephanie ReedGift Shop Supervisors

Security/Parking Services

Rachel "Beahr" GarciaSecurity/Parking
Services Supervisor
Irene HerrigAssociate Supervisor of Security
Sherisa Eselin, Janet Larson, Michael Moran, Jeffrey Neitzel,
Sonia PaulSecurity Officers
Alex Chacona, Deborah Elliott, Nicole Hagemeyer,
Lou Hicks, Norman Thrush, Jacynth Pohl,
Frank VasquezParking Lot Attendants
Mark Brickman, David Nguyen,
Michael SusongV.I.P. Valet Attendants